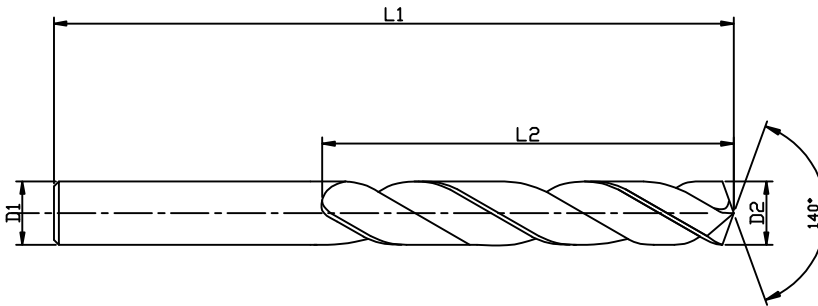


Solid Carbide High Performance Drills



SERIES : HDRP3

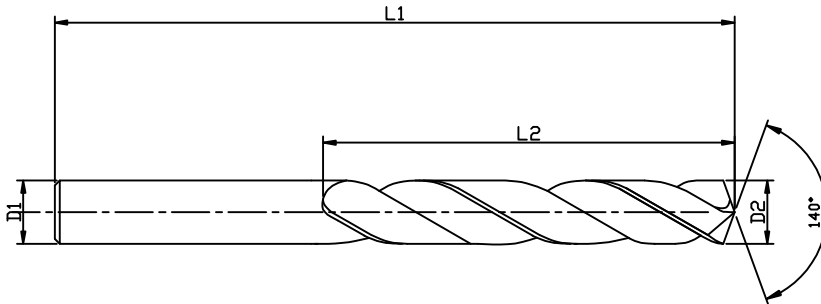
3 x D

| ITEM CODE | DIA (D2) | SH.DIA (D1) | FL (L2) | OAL (L1) |
|------------|----------|-------------|---------|----------|
| HDRP030N3C | 3 | 6 | 20 | 62 |
| HDRP031N3C | 3.1 | 6 | 20 | 62 |
| HDRP032N3C | 3.2 | 6 | 20 | 62 |
| HDRP033N3C | 3.3 | 6 | 20 | 62 |
| HDRP034N3C | 3.4 | 6 | 20 | 62 |
| HDRP035N3C | 3.5 | 6 | 20 | 62 |
| HDRP036N3C | 3.6 | 6 | 20 | 62 |
| HDRP037N3C | 3.7 | 6 | 20 | 62 |
| HDRP038N3C | 3.8 | 6 | 24 | 66 |
| HDRP039N3C | 3.9 | 6 | 24 | 66 |
| HDRP040N3C | 4 | 6 | 24 | 66 |
| HDRP041N3C | 4.1 | 6 | 24 | 66 |
| HDRP042N3C | 4.2 | 6 | 24 | 66 |
| HDRP043N3C | 4.3 | 6 | 24 | 66 |
| HDRP044N3C | 4.4 | 6 | 24 | 66 |
| HDRP045N3C | 4.5 | 6 | 24 | 66 |
| HDRP046N3C | 4.6 | 6 | 24 | 66 |
| HDRP047N3C | 4.7 | 6 | 24 | 66 |
| HDRP048N3C | 4.8 | 6 | 28 | 66 |
| HDRP049N3C | 4.9 | 6 | 28 | 66 |
| HDRP050N3C | 5 | 6 | 28 | 66 |
| HDRP051N3C | 5.1 | 6 | 28 | 66 |
| HDRP052N3C | 5.2 | 6 | 28 | 66 |
| HDRP053N3C | 5.3 | 6 | 28 | 66 |
| HDRP054N3C | 5.4 | 6 | 28 | 66 |
| HDRP055N3C | 5.5 | 6 | 28 | 66 |
| HDRP056N3C | 5.6 | 6 | 28 | 66 |
| HDRP057N3C | 5.7 | 6 | 28 | 66 |



Drill Dia Tol : m7
As per DIN 6537(S)

Solid Carbide High Performance Drills



SERIES : HDRP3

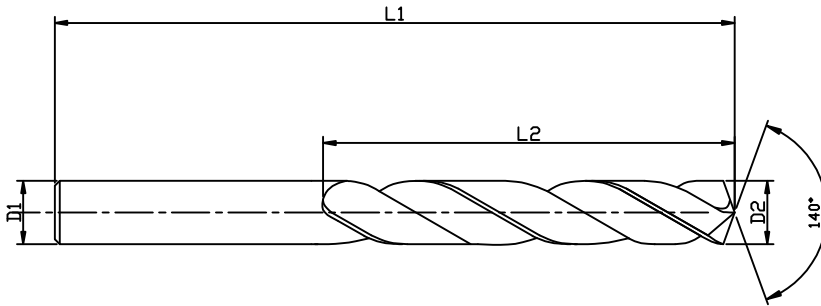
3 x D

| ITEM CODE | DIA (D2) | SH.DIA (D1) | FL (L2) | OAL (L1) |
|------------|----------|-------------|---------|----------|
| HDRP058N3C | 5.8 | 6 | 28 | 66 |
| HDRP059N3C | 5.9 | 6 | 28 | 66 |
| HDRP060N3C | 6 | 6 | 28 | 66 |
| HDRP061N3C | 6.1 | 8 | 34 | 79 |
| HDRP062N3C | 6.2 | 8 | 34 | 79 |
| HDRP063N3C | 6.3 | 8 | 34 | 79 |
| HDRP064N3C | 6.4 | 8 | 34 | 79 |
| HDRP065N3C | 6.5 | 8 | 34 | 79 |
| HDRP066N3C | 6.6 | 8 | 34 | 79 |
| HDRP067N3C | 6.7 | 8 | 34 | 79 |
| HDRP068N3C | 6.8 | 8 | 34 | 79 |
| HDRP069N3C | 6.9 | 8 | 34 | 79 |
| HDRP070N3C | 7 | 8 | 34 | 79 |
| HDRP071N3C | 7.1 | 8 | 41 | 79 |
| HDRP072N3C | 7.2 | 8 | 41 | 79 |
| HDRP073N3C | 7.3 | 8 | 41 | 79 |
| HDRP074N3C | 7.4 | 8 | 41 | 79 |
| HDRP075N3C | 7.5 | 8 | 41 | 79 |
| HDRP076N3C | 7.6 | 8 | 41 | 79 |
| HDRP077N3C | 7.7 | 8 | 41 | 79 |
| HDRP078N3C | 7.8 | 8 | 41 | 79 |
| HDRP079N3C | 7.9 | 8 | 41 | 79 |
| HDRP080N3C | 8 | 8 | 41 | 79 |
| HDRP081N3C | 8.1 | 10 | 47 | 89 |
| HDRP082N3C | 8.2 | 10 | 47 | 89 |
| HDRP083N3C | 8.3 | 10 | 47 | 89 |
| HDRP084N3C | 8.4 | 10 | 47 | 89 |
| HDRP085N3C | 8.5 | 10 | 47 | 89 |



Drill Dia Tol : m7
As per DIN 6537(S)

Solid Carbide High Performance Drills



SERIES : HDRP3

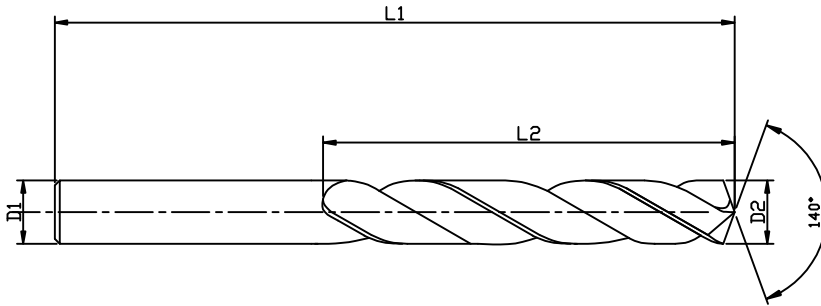
3 x D

| ITEM CODE | DIA (D2) | SH.DIA (D1) | FL (L2) | OAL (L1) |
|------------|----------|-------------|---------|----------|
| HDRP086N3C | 8.6 | 10 | 47 | 89 |
| HDRP087N3C | 8.7 | 10 | 47 | 89 |
| HDRP088N3C | 8.8 | 10 | 47 | 89 |
| HDRP089N3C | 8.9 | 10 | 47 | 89 |
| HDRP090N3C | 9 | 10 | 47 | 89 |
| HDRP091N3C | 9.1 | 10 | 47 | 89 |
| HDRP092N3C | 9.2 | 10 | 47 | 89 |
| HDRP093N3C | 9.3 | 10 | 47 | 89 |
| HDRP094N3C | 9.4 | 10 | 47 | 89 |
| HDRP095N3C | 9.5 | 10 | 47 | 89 |
| HDRP096N3C | 9.6 | 10 | 47 | 89 |
| HDRP097N3C | 9.7 | 10 | 47 | 89 |
| HDRP098N3C | 9.8 | 10 | 47 | 89 |
| HDRP099N3C | 9.9 | 10 | 47 | 89 |
| HDRP100N3C | 10 | 10 | 47 | 89 |
| HDRP101N3C | 10.1 | 12 | 55 | 102 |
| HDRP102N3C | 10.2 | 12 | 55 | 102 |
| HDRP103N3C | 10.3 | 12 | 55 | 102 |
| HDRP104N3C | 10.4 | 12 | 55 | 102 |
| HDRP105N3C | 10.5 | 12 | 55 | 102 |
| HDRP106N3C | 10.6 | 12 | 55 | 102 |
| HDRP107N3C | 10.7 | 12 | 55 | 102 |
| HDRP108N3C | 10.8 | 12 | 55 | 102 |
| HDRP109N3C | 10.9 | 12 | 55 | 102 |
| HDRP110N3C | 11 | 12 | 55 | 102 |
| HDRP111N3C | 11.1 | 12 | 55 | 102 |
| HDRP112N3C | 11.2 | 12 | 55 | 102 |
| HDRP113N3C | 11.3 | 12 | 55 | 102 |



Drill Dia Tol : m7
As per DIN 6537(S)

Solid Carbide High Performance Drills



SERIES : HDRP3

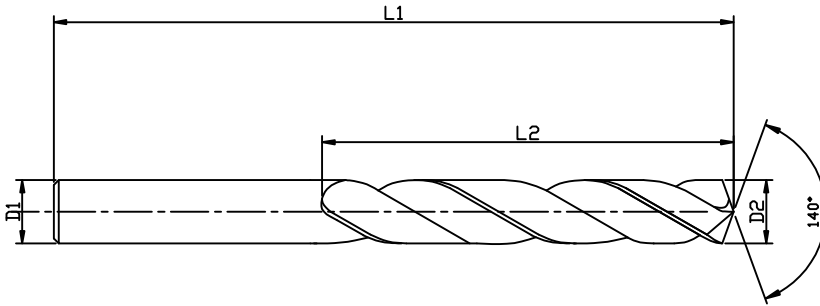
3 x D

| ITEM CODE | DIA (D2) | SH.DIA (D1) | FL (L2) | OAL (L1) |
|------------|----------|-------------|---------|----------|
| HDRP114N3C | 11.4 | 12 | 55 | 102 |
| HDRP115N3C | 11.5 | 12 | 55 | 102 |
| HDRP116N3C | 11.6 | 12 | 55 | 102 |
| HDRP117N3C | 11.7 | 12 | 55 | 102 |
| HDRP118N3C | 11.8 | 12 | 55 | 102 |
| HDRP119N3C | 11.9 | 12 | 55 | 102 |
| HDRP120N3C | 12 | 12 | 55 | 102 |
| HDRP125N3C | 12.5 | 14 | 60 | 107 |
| HDRP128N3C | 12.8 | 14 | 60 | 107 |
| HDRP130N3C | 13 | 14 | 60 | 107 |
| HDRP135N3C | 13.5 | 14 | 60 | 107 |
| HDRP138N3C | 13.8 | 14 | 60 | 107 |
| HDRP140N3C | 14 | 14 | 60 | 107 |
| HDRP145N3C | 14.5 | 16 | 65 | 115 |
| HDRP148N3C | 14.8 | 16 | 65 | 115 |
| HDRP150N3C | 15 | 16 | 65 | 115 |
| HDRP155N3C | 15.5 | 16 | 65 | 115 |
| HDRP158N3C | 15.8 | 16 | 65 | 115 |
| HDRP160N3C | 16 | 16 | 65 | 115 |
| HDRP165N3C | 16.5 | 18 | 73 | 123 |
| HDRP170N3C | 17 | 18 | 73 | 123 |
| HDRP175N3C | 17.5 | 18 | 73 | 123 |
| HDRP180N3C | 18 | 18 | 73 | 123 |
| HDRP185N3C | 18.5 | 20 | 79 | 131 |
| HDRP190N3C | 19 | 20 | 79 | 131 |
| HDRP195N3C | 19.5 | 20 | 79 | 131 |
| HDRP200N3C | 20 | 20 | 79 | 131 |



Drill Dia Tol : m7
As per DIN 6537(S)

Solid Carbide High Performance Drills



SERIES : HDRP5

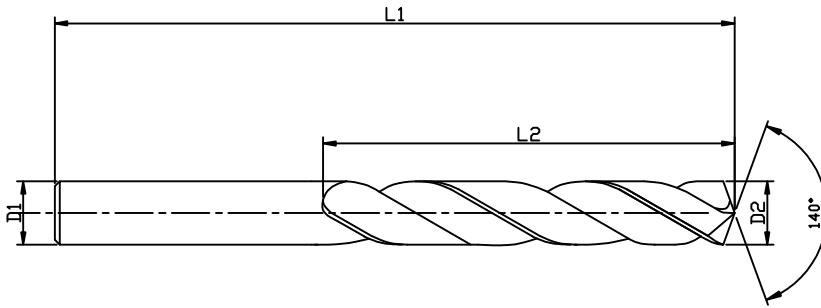
5 x D

| ITEM CODE | DIA (D2) | SH.DIA (D1) | FL (L2) | OAL (L1) |
|------------|----------|-------------|---------|----------|
| HDRP030N5C | 3 | 6 | 28 | 66 |
| HDRP031N5C | 3.1 | 6 | 28 | 66 |
| HDRP032N5C | 3.2 | 6 | 28 | 66 |
| HDRP033N5C | 3.3 | 6 | 28 | 66 |
| HDRP034N5C | 3.4 | 6 | 28 | 66 |
| HDRP035N5C | 3.5 | 6 | 28 | 66 |
| HDRP036N5C | 3.6 | 6 | 28 | 66 |
| HDRP037N5C | 3.7 | 6 | 28 | 66 |
| HDRP038N5C | 3.8 | 6 | 36 | 74 |
| HDRP039N5C | 3.9 | 6 | 36 | 74 |
| HDRP040N5C | 4 | 6 | 36 | 74 |
| HDRP041N5C | 4.1 | 6 | 36 | 74 |
| HDRP042N5C | 4.2 | 6 | 36 | 74 |
| HDRP043N5C | 4.3 | 6 | 36 | 74 |
| HDRP044N5C | 4.4 | 6 | 36 | 74 |
| HDRP045N5C | 4.5 | 6 | 36 | 74 |
| HDRP046N5C | 4.6 | 6 | 36 | 74 |
| HDRP047N5C | 4.7 | 6 | 36 | 74 |
| HDRP048N5C | 4.8 | 6 | 44 | 82 |
| HDRP049N5C | 4.9 | 6 | 44 | 82 |
| HDRP050N5C | 5 | 6 | 44 | 82 |
| HDRP051N5C | 5.1 | 6 | 44 | 82 |
| HDRP052N5C | 5.2 | 6 | 44 | 82 |
| HDRP053N5C | 5.3 | 6 | 44 | 82 |
| HDRP054N5C | 5.4 | 6 | 44 | 82 |
| HDRP055N5C | 5.5 | 6 | 44 | 82 |
| HDRP056N5C | 5.6 | 6 | 44 | 82 |



Drill Dia Tol : m7
As per DIN 6537

Solid Carbide High Performance Drills



SERIES : HDRP5

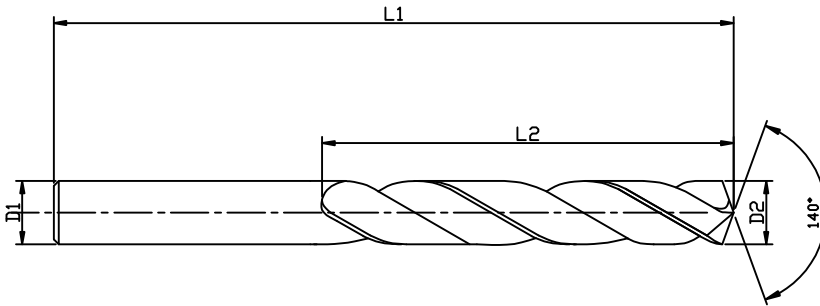
5 x D

| ITEM CODE | DIA (D2) | SH.DIA (D1) | FL (L2) | OAL (L1) |
|------------|----------|-------------|---------|----------|
| HDRP057N5C | 5.7 | 6 | 44 | 82 |
| HDRP058N5C | 5.8 | 6 | 44 | 82 |
| HDRP059N5C | 5.9 | 6 | 44 | 82 |
| HDRP060N5C | 6 | 6 | 44 | 82 |
| HDRP061N5C | 6.1 | 8 | 53 | 91 |
| HDRP062N5C | 6.2 | 8 | 53 | 91 |
| HDRP063N5C | 6.3 | 8 | 53 | 91 |
| HDRP064N5C | 6.4 | 8 | 53 | 91 |
| HDRP065N5C | 6.5 | 8 | 53 | 91 |
| HDRP066N5C | 6.6 | 8 | 53 | 91 |
| HDRP067N5C | 6.7 | 8 | 53 | 91 |
| HDRP068N5C | 6.8 | 8 | 53 | 91 |
| HDRP069N5C | 6.9 | 8 | 53 | 91 |
| HDRP070N5C | 7 | 8 | 53 | 91 |
| HDRP071N5C | 7.1 | 8 | 53 | 91 |
| HDRP072N5C | 7.2 | 8 | 53 | 91 |
| HDRP073N5C | 7.3 | 8 | 53 | 91 |
| HDRP074N5C | 7.4 | 8 | 53 | 91 |
| HDRP075N5C | 7.5 | 8 | 53 | 91 |
| HDRP076N5C | 7.6 | 8 | 53 | 91 |
| HDRP077N5C | 7.7 | 8 | 53 | 91 |
| HDRP078N5C | 7.8 | 8 | 53 | 91 |
| HDRP079N5C | 7.9 | 8 | 53 | 91 |
| HDRP080N5C | 8 | 8 | 53 | 91 |
| HDRP081N5C | 8.1 | 10 | 61 | 103 |
| HDRP082N5C | 8.2 | 10 | 61 | 103 |
| HDRP083N5C | 8.3 | 10 | 61 | 103 |



**Drill Dia Tol : m7
As per DIN 6537**

Solid Carbide High Performance Drills



SERIES : HDRP5

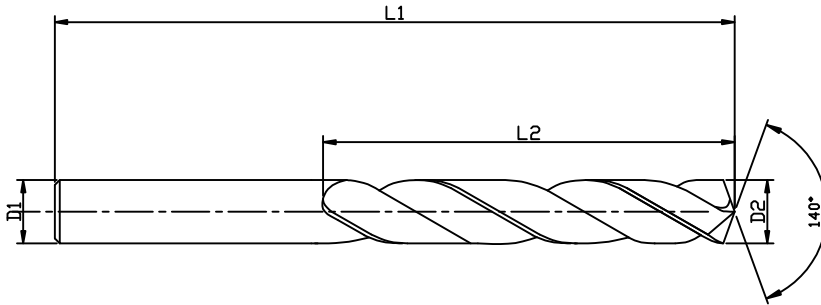
5 x D

| ITEM CODE | DIA (D2) | SH.DIA (D1) | FL (L2) | OAL (L1) |
|------------|----------|-------------|---------|----------|
| HDRP084N5C | 8.4 | 10 | 61 | 103 |
| HDRP085N5C | 8.5 | 10 | 61 | 103 |
| HDRP086N5C | 8.6 | 10 | 61 | 103 |
| HDRP087N5C | 8.7 | 10 | 61 | 103 |
| HDRP088N5C | 8.8 | 10 | 61 | 103 |
| HDRP089N5C | 8.9 | 10 | 61 | 103 |
| HDRP090N5C | 9 | 10 | 61 | 103 |
| HDRP091N5C | 9.1 | 10 | 61 | 103 |
| HDRP092N5C | 9.2 | 10 | 61 | 103 |
| HDRP093N5C | 9.3 | 10 | 61 | 103 |
| HDRP094N5C | 9.4 | 10 | 61 | 103 |
| HDRP095N5C | 9.5 | 10 | 61 | 103 |
| HDRP096N5C | 9.6 | 10 | 61 | 103 |
| HDRP097N5C | 9.7 | 10 | 61 | 103 |
| HDRP098N5C | 9.8 | 10 | 61 | 103 |
| HDRP099N5C | 9.9 | 10 | 61 | 103 |
| HDRP100N5C | 10 | 10 | 61 | 103 |
| HDRP101N5C | 10.1 | 12 | 71 | 118 |
| HDRP102N5C | 10.2 | 12 | 71 | 118 |
| HDRP103N5C | 10.3 | 12 | 71 | 118 |
| HDRP104N5C | 10.4 | 12 | 71 | 118 |
| HDRP105N5C | 10.5 | 12 | 71 | 118 |
| HDRP106N5C | 10.6 | 12 | 71 | 118 |
| HDRP107N5C | 10.7 | 12 | 71 | 118 |
| HDRP108N5C | 10.8 | 12 | 71 | 118 |
| HDRP109N5C | 10.9 | 12 | 71 | 118 |
| HDRP110N5C | 11 | 12 | 71 | 118 |



**Drill Dia Tol : m7
As per DIN 6537**

Solid Carbide High Performance Drills



SERIES : HDRP5

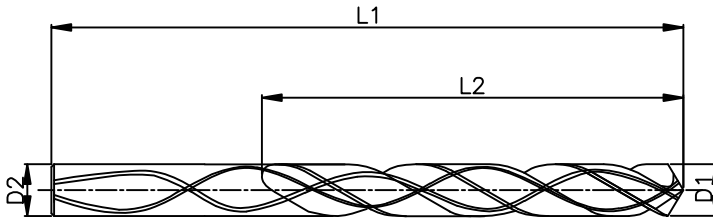
5 x D

| ITEM CODE | DIA (D2) | SH.DIA (D1) | FL (L2) | OAL (L1) |
|------------|----------|-------------|---------|----------|
| HDRP111N5C | 11.1 | 12 | 71 | 118 |
| HDRP112N5C | 11.2 | 12 | 71 | 118 |
| HDRP113N5C | 11.3 | 12 | 71 | 118 |
| HDRP114N5C | 11.4 | 12 | 71 | 118 |
| HDRP115N5C | 11.5 | 12 | 71 | 118 |
| HDRP116N5C | 11.6 | 12 | 71 | 118 |
| HDRP117N5C | 11.7 | 12 | 71 | 118 |
| HDRP118N5C | 11.8 | 12 | 71 | 118 |
| HDRP119N5C | 11.9 | 12 | 71 | 118 |
| HDRP120N5C | 12 | 12 | 71 | 118 |
| HDRP125N5C | 12.5 | 14 | 77 | 124 |
| HDRP130N5C | 13 | 14 | 77 | 124 |
| HDRP135N5C | 13.5 | 14 | 77 | 124 |
| HDRP140N5C | 14 | 14 | 77 | 124 |
| HDRP145N5C | 14.5 | 16 | 83 | 133 |
| HDRP150N5C | 15 | 16 | 83 | 133 |
| HDRP155N5C | 15.5 | 16 | 83 | 133 |
| HDRP160N5C | 16 | 16 | 83 | 133 |
| HDRP165N5C | 16.5 | 18 | 93 | 143 |
| HDRP170N5C | 17 | 18 | 93 | 143 |
| HDRP175N5C | 17.5 | 18 | 93 | 143 |
| HDRP180N5C | 18 | 18 | 93 | 143 |
| HDRP185N5C | 18.5 | 20 | 101 | 153 |
| HDRP190N5C | 19 | 20 | 101 | 153 |
| HDRP195N5C | 19.5 | 20 | 101 | 153 |
| HDRP200N5C | 20 | 20 | 101 | 153 |



Drill Dia Tol : m7
As per DIN 6537

Solid Carbide Through Coolant Drills



SERIES : HDRT3

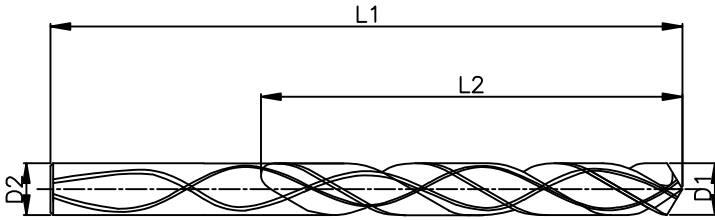
3 x D

| ITEM CODE | DIA (D1) | SH.DIA (D2) | FL (L2) | OAL (L1) |
|-------------|-------------|----------------|------------|-------------|
| HDRP030N3TC | 3 | 6 | 20 | 62 |
| HDRP031N3TC | 3.1 | 6 | 20 | 62 |
| HDRP032N3TC | 3.2 | 6 | 20 | 62 |
| HDRP033N3TC | 3.3 | 6 | 20 | 62 |
| HDRP034N3TC | 3.4 | 6 | 20 | 62 |
| HDRP035N3TC | 3.5 | 6 | 20 | 62 |
| HDRP036N3TC | 3.6 | 6 | 20 | 62 |
| HDRP037N3TC | 3.7 | 6 | 20 | 62 |
| HDRP038N3TC | 3.8 | 6 | 24 | 66 |
| HDRP039N3TC | 3.9 | 6 | 24 | 66 |
| HDRP040N3TC | 4 | 6 | 24 | 66 |
| HDRP041N3TC | 4.1 | 6 | 24 | 66 |
| HDRP042N3TC | 4.2 | 6 | 24 | 66 |
| HDRP043N3TC | 4.3 | 6 | 24 | 66 |
| HDRP044N3TC | 4.4 | 6 | 24 | 66 |
| HDRP045N3TC | 4.5 | 6 | 24 | 66 |
| HDRP046N3TC | 4.6 | 6 | 24 | 66 |
| HDRP047N3TC | 4.7 | 6 | 24 | 66 |
| HDRP048N3TC | 4.8 | 6 | 28 | 66 |
| HDRP049N3TC | 4.9 | 6 | 28 | 66 |
| HDRP050N3TC | 5 | 6 | 28 | 66 |
| HDRP051N3TC | 5.1 | 6 | 28 | 66 |
| HDRP052N3TC | 5.2 | 6 | 28 | 66 |
| HDRP053N3TC | 5.3 | 6 | 28 | 66 |
| HDRP054N3TC | 5.4 | 6 | 28 | 66 |
| HDRP055N3TC | 5.5 | 6 | 28 | 66 |
| HDRP056N3TC | 5.6 | 6 | 28 | 66 |
| HDRP057N3TC | 5.7 | 6 | 28 | 66 |



Drill Dia Tol : m7
As per DIN 6537(S)

Solid Carbide Through Coolant Drills



SERIES : HDRT3

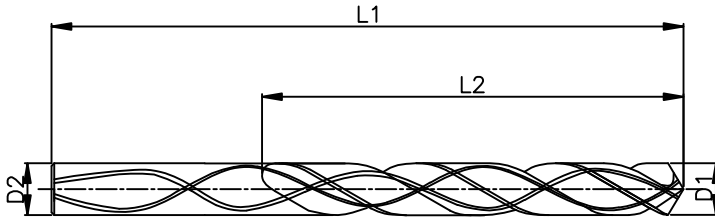
3 x D

| ITEM CODE | DIA (D1) | SH.DIA (D2) | FL (L2) | OAL (L1) |
|-------------|----------|-------------|---------|----------|
| HDRP058N3TC | 5.8 | 6 | 28 | 66 |
| HDRP059N3TC | 5.9 | 6 | 28 | 66 |
| HDRP060N3TC | 6 | 6 | 28 | 66 |
| HDRP061N3TC | 6.1 | 8 | 34 | 79 |
| HDRP062N3TC | 6.2 | 8 | 34 | 79 |
| HDRP063N3TC | 6.3 | 8 | 34 | 79 |
| HDRP064N3TC | 6.4 | 8 | 34 | 79 |
| HDRP065N3TC | 6.5 | 8 | 34 | 79 |
| HDRP066N3TC | 6.6 | 8 | 34 | 79 |
| HDRP067N3TC | 6.7 | 8 | 34 | 79 |
| HDRP068N3TC | 6.8 | 8 | 34 | 79 |
| HDRP069N3TC | 6.9 | 8 | 34 | 79 |
| HDRP070N3TC | 7 | 8 | 34 | 79 |
| HDRP071N3TC | 7.1 | 8 | 41 | 79 |
| HDRP072N3TC | 7.2 | 8 | 41 | 79 |
| HDRP073N3TC | 7.3 | 8 | 41 | 79 |
| HDRP074N3TC | 7.4 | 8 | 41 | 79 |
| HDRP075N3TC | 7.5 | 8 | 41 | 79 |
| HDRP076N3TC | 7.6 | 8 | 41 | 79 |
| HDRP077N3TC | 7.7 | 8 | 41 | 79 |
| HDRP078N3TC | 7.8 | 8 | 41 | 79 |
| HDRP079N3TC | 7.9 | 8 | 41 | 79 |
| HDRP080N3TC | 8 | 8 | 41 | 79 |
| HDRP081N3TC | 8.1 | 10 | 47 | 89 |
| HDRP082N3TC | 8.2 | 10 | 47 | 89 |
| HDRP083N3TC | 8.3 | 10 | 47 | 89 |
| HDRP084N3TC | 8.4 | 10 | 47 | 89 |
| HDRP085N3TC | 8.5 | 10 | 47 | 89 |



Drill Dia Tol : m7
As per DIN 6537(S)

Solid Carbide Through Coolant Drills



SERIES : HDRT3

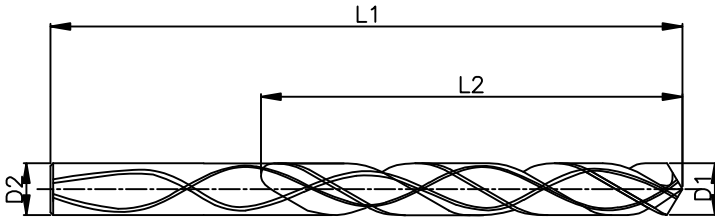
3 x D

| ITEM CODE | DIA (D1) | SH.DIA (D2) | FL (L2) | OAL (L1) |
|-------------|----------|-------------|---------|----------|
| HDRP086N3TC | 8.6 | 10 | 47 | 89 |
| HDRP087N3TC | 8.7 | 10 | 47 | 89 |
| HDRP088N3TC | 8.8 | 10 | 47 | 89 |
| HDRP089N3TC | 8.9 | 10 | 47 | 89 |
| HDRP090N3TC | 9 | 10 | 47 | 89 |
| HDRP091N3TC | 9.1 | 10 | 47 | 89 |
| HDRP092N3TC | 9.2 | 10 | 47 | 89 |
| HDRP093N3TC | 9.3 | 10 | 47 | 89 |
| HDRP094N3TC | 9.4 | 10 | 47 | 89 |
| HDRP095N3TC | 9.5 | 10 | 47 | 89 |
| HDRP096N3TC | 9.6 | 10 | 47 | 89 |
| HDRP097N3TC | 9.7 | 10 | 47 | 89 |
| HDRP098N3TC | 9.8 | 10 | 47 | 89 |
| HDRP099N3TC | 9.9 | 10 | 47 | 89 |
| HDRP100N3TC | 10 | 10 | 47 | 89 |
| HDRP101N3TC | 10.1 | 12 | 55 | 102 |
| HDRP102N3TC | 10.2 | 12 | 55 | 102 |
| HDRP103N3TC | 10.3 | 12 | 55 | 102 |
| HDRP104N3TC | 10.4 | 12 | 55 | 102 |
| HDRP105N3TC | 10.5 | 12 | 55 | 102 |
| HDRP106N3TC | 10.6 | 12 | 55 | 102 |
| HDRP107N3TC | 10.7 | 12 | 55 | 102 |
| HDRP108N3TC | 10.8 | 12 | 55 | 102 |
| HDRP109N3TC | 10.9 | 12 | 55 | 102 |
| HDRP110N3TC | 11 | 12 | 55 | 102 |
| HDRP111N3TC | 11.1 | 12 | 55 | 102 |
| HDRP112N3TC | 11.2 | 12 | 55 | 102 |
| HDRP113N3TC | 11.3 | 12 | 55 | 102 |



Drill Dia Tol : m7
As per DIN 6537(S)

Solid Carbide Through Coolant Drills



SERIES : HDRT3

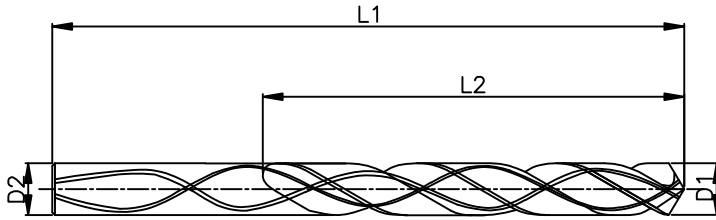
3 x D

| ITEM CODE | DIA (D1) | SH.DIA (D2) | FL (L2) | OAL (L1) |
|-------------|----------|-------------|---------|----------|
| HDRP114N3TC | 11.4 | 12 | 55 | 102 |
| HDRP115N3TC | 11.5 | 12 | 55 | 102 |
| HDRP116N3TC | 11.6 | 12 | 55 | 102 |
| HDRP117N3TC | 11.7 | 12 | 55 | 102 |
| HDRP118N3TC | 11.8 | 12 | 55 | 102 |
| HDRP119N3TC | 11.9 | 12 | 55 | 102 |
| HDRP120N3TC | 12 | 12 | 55 | 102 |
| HDRP125N3TC | 12.5 | 14 | 60 | 107 |
| HDRP128N3TC | 12.8 | 14 | 60 | 107 |
| HDRP130N3TC | 13 | 14 | 60 | 107 |
| HDRP135N3TC | 13.5 | 14 | 60 | 107 |
| HDRP138N3TC | 13.8 | 14 | 60 | 107 |
| HDRP140N3TC | 14 | 14 | 60 | 107 |
| HDRP145N3TC | 14.5 | 16 | 65 | 115 |
| HDRP148N3TC | 14.8 | 16 | 65 | 115 |
| HDRP150N3TC | 15 | 16 | 65 | 115 |
| HDRP155N3TC | 15.5 | 16 | 65 | 115 |
| HDRP158N3TC | 15.8 | 16 | 65 | 115 |
| HDRP160N3TC | 16 | 16 | 65 | 115 |
| HDRP165N3TC | 16.5 | 18 | 73 | 123 |
| HDRP170N3TC | 17 | 18 | 73 | 123 |
| HDRP175N3TC | 17.5 | 18 | 73 | 123 |
| HDRP180N3TC | 18 | 18 | 73 | 123 |
| HDRP185N3TC | 18.5 | 20 | 79 | 131 |
| HDRP190N3TC | 19 | 20 | 79 | 131 |
| HDRP195N3TC | 19.5 | 20 | 79 | 131 |
| HDRP200N3TC | 20 | 20 | 79 | 131 |



Drill Dia Tol : m7
As per DIN 6537(S)

Solid Carbide Through Coolant Drills



SERIES : HDRT5

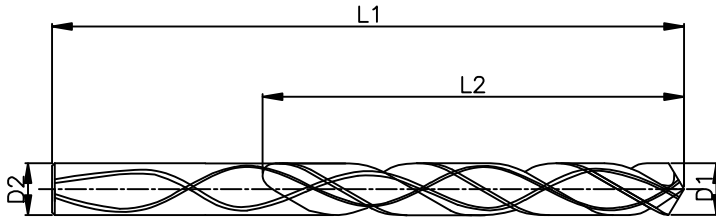
5 x D

| ITEM CODE | DIA (D1) | SH.DIA (D2) | FL (L2) | OAL (L1) |
|-------------|----------|-------------|---------|----------|
| HDRP030N5TC | 3 | 6 | 28 | 66 |
| HDRP031N5TC | 3.1 | 6 | 28 | 66 |
| HDRP032N5TC | 3.2 | 6 | 28 | 66 |
| HDRP033N5TC | 3.3 | 6 | 28 | 66 |
| HDRP034N5TC | 3.4 | 6 | 28 | 66 |
| HDRP035N5TC | 3.5 | 6 | 28 | 66 |
| HDRP036N5TC | 3.6 | 6 | 28 | 66 |
| HDRP037N5TC | 3.7 | 6 | 28 | 66 |
| HDRP038N5TC | 3.8 | 6 | 36 | 74 |
| HDRP039N5TC | 3.9 | 6 | 36 | 74 |
| HDRP040N5TC | 4 | 6 | 36 | 74 |
| HDRP041N5TC | 4.1 | 6 | 36 | 74 |
| HDRP042N5TC | 4.2 | 6 | 36 | 74 |
| HDRP043N5TC | 4.3 | 6 | 36 | 74 |
| HDRP044N5TC | 4.4 | 6 | 36 | 74 |
| HDRP045N5TC | 4.5 | 6 | 36 | 74 |
| HDRP046N5TC | 4.6 | 6 | 36 | 74 |
| HDRP047N5TC | 4.7 | 6 | 36 | 74 |
| HDRP048N5TC | 4.8 | 6 | 44 | 82 |
| HDRP049N5TC | 4.9 | 6 | 44 | 82 |
| HDRP050N5TC | 5 | 6 | 44 | 82 |
| HDRP051N5TC | 5.1 | 6 | 44 | 82 |
| HDRP052N5TC | 5.2 | 6 | 44 | 82 |
| HDRP053N5TC | 5.3 | 6 | 44 | 82 |
| HDRP054N5TC | 5.4 | 6 | 44 | 82 |
| HDRP055N5TC | 5.5 | 6 | 44 | 82 |
| HDRP056N5TC | 5.6 | 6 | 44 | 82 |
| HDRP057N5TC | 5.7 | 6 | 44 | 82 |



Drill Dia Tol : m7
As per DIN 6537

Solid Carbide Through Coolant Drills



SERIES : HDRT5

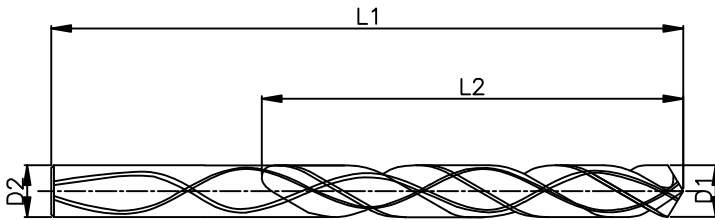
5 x D

| ITEM CODE | DIA (D1) | SH.DIA (D2) | FL (L2) | OAL (L1) |
|-------------|----------|-------------|---------|----------|
| HDRP058N5TC | 5.8 | 6 | 44 | 82 |
| HDRP059N5TC | 5.9 | 6 | 44 | 82 |
| HDRP060N5TC | 6 | 6 | 44 | 82 |
| HDRP061N5TC | 6.1 | 8 | 53 | 91 |
| HDRP062N5TC | 6.2 | 8 | 53 | 91 |
| HDRP063N5TC | 6.3 | 8 | 53 | 91 |
| HDRP064N5TC | 6.4 | 8 | 53 | 91 |
| HDRP065N5TC | 6.5 | 8 | 53 | 91 |
| HDRP066N5TC | 6.6 | 8 | 53 | 91 |
| HDRP067N5TC | 6.7 | 8 | 53 | 91 |
| HDRP068N5TC | 6.8 | 8 | 53 | 91 |
| HDRP069N5TC | 6.9 | 8 | 53 | 91 |
| HDRP070N5TC | 7 | 8 | 53 | 91 |
| HDRP071N5TC | 7.1 | 8 | 53 | 91 |
| HDRP072N5TC | 7.2 | 8 | 53 | 91 |
| HDRP073N5TC | 7.3 | 8 | 53 | 91 |
| HDRP074N5TC | 7.4 | 8 | 53 | 91 |
| HDRP075N5TC | 7.5 | 8 | 53 | 91 |
| HDRP076N5TC | 7.6 | 8 | 53 | 91 |
| HDRP077N5TC | 7.7 | 8 | 53 | 91 |
| HDRP078N5TC | 7.8 | 8 | 53 | 91 |
| HDRP079N5TC | 7.9 | 8 | 53 | 91 |
| HDRP080N5TC | 8 | 8 | 53 | 91 |
| HDRP081N5TC | 8.1 | 10 | 61 | 103 |
| HDRP082N5TC | 8.2 | 10 | 61 | 103 |
| HDRP083N5TC | 8.3 | 10 | 61 | 103 |
| HDRP084N5TC | 8.4 | 10 | 61 | 103 |
| HDRP085N5TC | 8.5 | 10 | 61 | 103 |



Drill Dia Tol : m7
As per DIN 6537

Solid Carbide Through Coolant Drills



SERIES : HDRT5

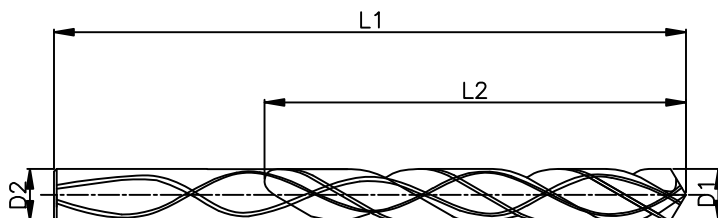
5 x D

| ITEM CODE | DIA (D1) | SH.DIA (D2) | FL (L2) | OAL (L1) |
|-------------|----------|-------------|---------|----------|
| HDRP086N5TC | 8.6 | 10 | 61 | 103 |
| HDRP087N5TC | 8.7 | 10 | 61 | 103 |
| HDRP088N5TC | 8.8 | 10 | 61 | 103 |
| HDRP089N5TC | 8.9 | 10 | 61 | 103 |
| HDRP090N5TC | 9 | 10 | 61 | 103 |
| HDRP091N5TC | 9.1 | 10 | 61 | 103 |
| HDRP092N5TC | 9.2 | 10 | 61 | 103 |
| HDRP093N5TC | 9.3 | 10 | 61 | 103 |
| HDRP094N5TC | 9.4 | 10 | 61 | 103 |
| HDRP095N5TC | 9.5 | 10 | 61 | 103 |
| HDRP096N5TC | 9.6 | 10 | 61 | 103 |
| HDRP097N5TC | 9.7 | 10 | 61 | 103 |
| HDRP098N5TC | 9.8 | 10 | 61 | 103 |
| HDRP099N5TC | 9.9 | 10 | 61 | 103 |
| HDRP100N5TC | 10 | 10 | 61 | 103 |
| HDRP101N5TC | 10.1 | 12 | 71 | 118 |
| HDRP102N5TC | 10.2 | 12 | 71 | 118 |
| HDRP103N5TC | 10.3 | 12 | 71 | 118 |
| HDRP104N5TC | 10.4 | 12 | 71 | 118 |
| HDRP105N5TC | 10.5 | 12 | 71 | 118 |
| HDRP106N5TC | 10.6 | 12 | 71 | 118 |
| HDRP107N5TC | 10.7 | 12 | 71 | 118 |
| HDRP108N5TC | 10.8 | 12 | 71 | 118 |
| HDRP109N5TC | 10.9 | 12 | 71 | 118 |
| HDRP110N5TC | 11 | 12 | 71 | 118 |
| HDRP111N5TC | 11.1 | 12 | 71 | 118 |
| HDRP112N5TC | 11.2 | 12 | 71 | 118 |
| HDRP113N5TC | 11.3 | 12 | 71 | 118 |



Drill Dia Tol : m7
As per DIN 6537

Solid Carbide Through Coolant Drills



SERIES : HDRT5

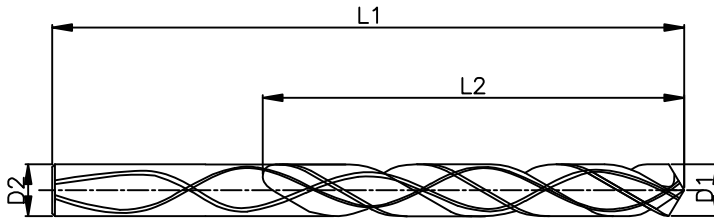
5 x D

| ITEM CODE | DIA (D1) | SH.DIA (D2) | FL (L2) | OAL (L1) |
|-------------|-------------|----------------|------------|-------------|
| HDRP114N5TC | 11.4 | 12 | 71 | 118 |
| HDRP115N5TC | 11.5 | 12 | 71 | 118 |
| HDRP116N5TC | 11.6 | 12 | 71 | 118 |
| HDRP117N5TC | 11.7 | 12 | 71 | 118 |
| HDRP118N5TC | 11.8 | 12 | 71 | 118 |
| HDRP119N5TC | 11.9 | 12 | 71 | 118 |
| HDRP120N5TC | 12 | 12 | 71 | 118 |
| HDRP125N5TC | 12.5 | 14 | 77 | 124 |
| HDRP130N5TC | 13 | 14 | 77 | 124 |
| HDRP135N5TC | 13.5 | 14 | 77 | 124 |
| HDRP140N5TC | 14 | 14 | 77 | 124 |
| HDRP145N5TC | 14.5 | 16 | 83 | 133 |
| HDRP150N5TC | 15 | 16 | 83 | 133 |
| HDRP155N5TC | 15.5 | 16 | 83 | 133 |
| HDRP160N5TC | 16 | 16 | 83 | 133 |
| HDRP165N5TC | 16.5 | 18 | 93 | 143 |
| HDRP170N5TC | 17 | 18 | 93 | 143 |
| HDRP175N5TC | 17.5 | 18 | 93 | 143 |
| HDRP180N5TC | 18 | 18 | 93 | 143 |
| HDRP185N5TC | 18.5 | 20 | 101 | 153 |
| HDRP190N5TC | 19 | 20 | 101 | 153 |
| HDRP195N5TC | 19.5 | 20 | 101 | 153 |
| HDRP200N5TC | 20 | 20 | 101 | 153 |



Drill Dia Tol : m7
As per DIN 6537

Solid Carbide Through Coolant Drills



SERIES : HDRT8

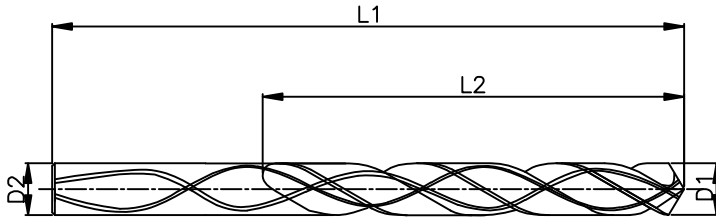
8 x D

| ITEM CODE | DIA (D1) | SH.DIA (D2) | FL (L2) | OAL (L1) |
|-------------|----------|-------------|---------|----------|
| HDRP030N8TC | 3 | 6 | 34 | 72 |
| HDRP031N8TC | 3.1 | 6 | 34 | 72 |
| HDRP032N8TC | 3.2 | 6 | 34 | 72 |
| HDRP033N8TC | 3.3 | 6 | 34 | 72 |
| HDRP034N8TC | 3.4 | 6 | 34 | 72 |
| HDRP035N8TC | 3.5 | 6 | 34 | 72 |
| HDRP036N8TC | 3.6 | 6 | 34 | 72 |
| HDRP037N8TC | 3.7 | 6 | 34 | 72 |
| HDRP038N8TC | 3.8 | 6 | 43 | 81 |
| HDRP039N8TC | 3.9 | 6 | 43 | 81 |
| HDRP040N8TC | 4 | 6 | 43 | 81 |
| HDRP041N8TC | 4.1 | 6 | 43 | 81 |
| HDRP042N8TC | 4.2 | 6 | 43 | 81 |
| HDRP043N8TC | 4.3 | 6 | 43 | 81 |
| HDRP044N8TC | 4.4 | 6 | 43 | 81 |
| HDRP045N8TC | 4.5 | 6 | 43 | 81 |
| HDRP046N8TC | 4.6 | 6 | 43 | 81 |
| HDRP047N8TC | 4.7 | 6 | 43 | 81 |
| HDRP048N8TC | 4.8 | 6 | 57 | 95 |
| HDRP049N8TC | 4.9 | 6 | 57 | 95 |
| HDRP050N8TC | 5 | 6 | 57 | 95 |
| HDRP051N8TC | 5.1 | 6 | 57 | 95 |
| HDRP052N8TC | 5.2 | 6 | 57 | 95 |
| HDRP053N8TC | 5.3 | 6 | 57 | 95 |
| HDRP054N8TC | 5.4 | 6 | 57 | 95 |



Drill Dia Tol : m7
As per DIN 6537(L)

Solid Carbide Through Coolant Drills



SERIES : HDRT8

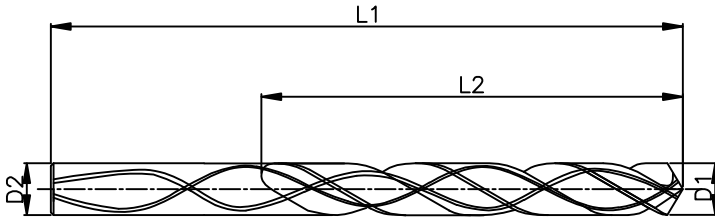
8 x D

| ITEM CODE | DIA (D1) | SH.DIA (D2) | FL (L2) | OAL (L1) |
|-------------|----------|-------------|---------|----------|
| HDRP055N8TC | 5.5 | 6 | 57 | 95 |
| HDRP056N8TC | 5.6 | 6 | 57 | 95 |
| HDRP057N8TC | 5.7 | 6 | 57 | 95 |
| HDRP058N8TC | 5.8 | 6 | 57 | 95 |
| HDRP059N8TC | 5.9 | 6 | 57 | 95 |
| HDRP060N8TC | 6 | 6 | 57 | 95 |
| HDRP061N8TC | 6.1 | 8 | 76 | 114 |
| HDRP062N8TC | 6.2 | 8 | 76 | 114 |
| HDRP063N8TC | 6.3 | 8 | 76 | 114 |
| HDRP064N8TC | 6.4 | 8 | 76 | 114 |
| HDRP065N8TC | 6.5 | 8 | 76 | 114 |
| HDRP066N8TC | 6.6 | 8 | 76 | 114 |
| HDRP067N8TC | 6.7 | 8 | 76 | 114 |
| HDRP068N8TC | 6.8 | 8 | 76 | 114 |
| HDRP069N8TC | 6.9 | 8 | 76 | 114 |
| HDRP070N8TC | 7 | 8 | 76 | 114 |
| HDRP071N8TC | 7.1 | 8 | 76 | 114 |
| HDRP072N8TC | 7.2 | 8 | 76 | 114 |
| HDRP073N8TC | 7.3 | 8 | 76 | 114 |
| HDRP074N8TC | 7.4 | 8 | 76 | 114 |
| HDRP075N8TC | 7.5 | 8 | 76 | 114 |
| HDRP076N8TC | 7.6 | 8 | 76 | 114 |
| HDRP077N8TC | 7.7 | 8 | 76 | 114 |
| HDRP078N8TC | 7.8 | 8 | 76 | 114 |



Drill Dia Tol : m7
As per DIN 6537(L)

Solid Carbide Through Coolant Drills



SERIES : HDRT8

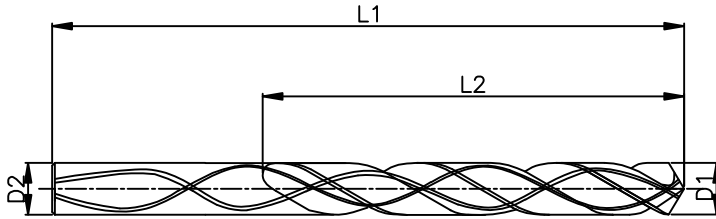
8 x D

| ITEM CODE | DIA (D1) | SH.DIA (D2) | FL (L2) | OAL (L1) |
|-------------|----------|-------------|---------|----------|
| HDRP079N8TC | 7.9 | 8 | 76 | 114 |
| HDRP080N8TC | 8 | 8 | 76 | 114 |
| HDRP081N8TC | 8.1 | 10 | 95 | 142 |
| HDRP082N8TC | 8.2 | 10 | 95 | 142 |
| HDRP083N8TC | 8.3 | 10 | 95 | 142 |
| HDRP084N8TC | 8.4 | 10 | 95 | 142 |
| HDRP085N8TC | 8.5 | 10 | 95 | 142 |
| HDRP086N8TC | 8.6 | 10 | 95 | 142 |
| HDRP087N8TC | 8.7 | 10 | 95 | 142 |
| HDRP088N8TC | 8.8 | 10 | 95 | 142 |
| HDRP089N8TC | 8.9 | 10 | 95 | 142 |
| HDRP090N8TC | 9 | 10 | 95 | 142 |
| HDRP091N8TC | 9.1 | 10 | 95 | 142 |
| HDRP092N8TC | 9.2 | 10 | 95 | 142 |
| HDRP093N8TC | 9.3 | 10 | 95 | 142 |
| HDRP094N8TC | 9.4 | 10 | 95 | 142 |
| HDRP095N8TC | 9.5 | 10 | 95 | 142 |
| HDRP096N8TC | 9.6 | 10 | 95 | 142 |
| HDRP097N8TC | 9.7 | 10 | 95 | 142 |
| HDRP098N8TC | 9.8 | 10 | 95 | 142 |
| HDRP099N8TC | 9.9 | 10 | 95 | 142 |
| HDRP100N8TC | 10 | 10 | 95 | 142 |
| HDRP101N8TC | 10.1 | 12 | 114 | 162 |
| HDRP102N8TC | 10.2 | 12 | 114 | 162 |
| HDRP103N8TC | 10.3 | 12 | 114 | 162 |



Drill Dia Tol : m7
As per DIN 6537(L)

Solid Carbide Through Coolant Drills



SERIES : HDRT8

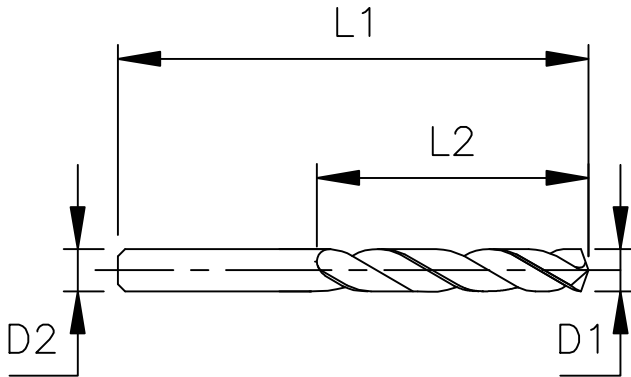
8 x D

| ITEM CODE | DIA (D1) | SH.DIA (D2) | FL (L2) | OAL (L1) |
|-------------|-------------|----------------|------------|-------------|
| HDRP104N8TC | 10.4 | 12 | 114 | 162 |
| HDRP105N8TC | 10.5 | 12 | 114 | 162 |
| HDRP106N8TC | 10.6 | 12 | 114 | 162 |
| HDRP107N8TC | 10.7 | 12 | 114 | 162 |
| HDRP108N8TC | 10.8 | 12 | 114 | 162 |
| HDRP109N8TC | 10.9 | 12 | 114 | 162 |
| HDRP110N8TC | 11 | 12 | 114 | 162 |
| HDRP111N8TC | 11.1 | 12 | 114 | 162 |
| HDRP112N8TC | 11.2 | 12 | 114 | 162 |
| HDRP113N8TC | 11.3 | 12 | 114 | 162 |
| HDRP114N8TC | 11.4 | 12 | 114 | 162 |
| HDRP115N8TC | 11.5 | 12 | 114 | 162 |
| HDRP116N8TC | 11.6 | 12 | 114 | 162 |
| HDRP117N8TC | 11.7 | 12 | 114 | 162 |
| HDRP118N8TC | 11.8 | 12 | 114 | 162 |
| HDRP119N8TC | 11.9 | 12 | 114 | 162 |
| HDRP120N8TC | 12 | 12 | 114 | 162 |



Drill Dia Tol : m7
As per DIN 6537(L)

Solid Carbide Stub Drills



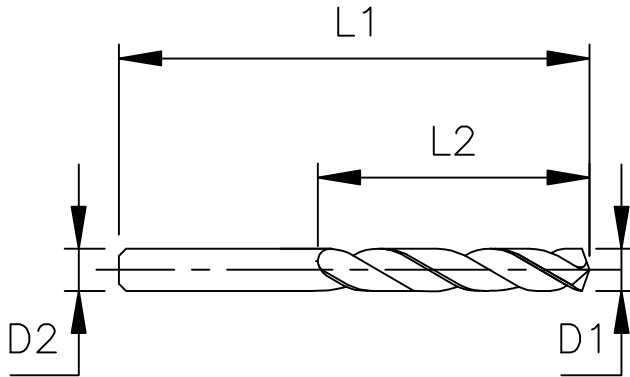
SERIES : HDRMI

| ITEM CODE | DIA (D1) | SH.DIA (D2) | FL (L2) | OAL (L1) |
|--------------|----------|-------------|---------|----------|
| HDRP010MINIC | 1 | 1 | 6 | 26 |
| HDRP011MINIC | 1.1 | 1.1 | 7 | 28 |
| HDRP012MINIC | 1.2 | 1.2 | 8 | 30 |
| HDRP013MINIC | 1.3 | 1.3 | 8 | 30 |
| HDRP014MINIC | 1.4 | 1.4 | 9 | 32 |
| HDRP015MINIC | 1.5 | 1.5 | 9 | 32 |
| HDRP016MINIC | 1.6 | 1.6 | 10 | 34 |
| HDRP017MINIC | 1.7 | 1.7 | 10 | 34 |
| HDRP018MINIC | 1.8 | 1.8 | 11 | 36 |
| HDRP019MINIC | 1.9 | 1.9 | 11 | 36 |
| HDRP020MINIC | 2 | 2 | 12 | 38 |
| HDRP021MINIC | 2.1 | 2.1 | 12 | 38 |
| HDRP022MINIC | 2.2 | 2.2 | 13 | 40 |
| HDRP023MINIC | 2.3 | 2.3 | 13 | 40 |
| HDRP024MINIC | 2.4 | 2.4 | 14 | 43 |
| HDRP025MINIC | 2.5 | 2.5 | 14 | 43 |
| HDRP026MINIC | 2.6 | 2.6 | 14 | 43 |
| HDRP027MINIC | 2.7 | 2.7 | 16 | 46 |
| HDRP028MINIC | 2.8 | 2.8 | 16 | 46 |
| HDRP029MINIC | 2.9 | 2.9 | 16 | 46 |



Drill Dia Tol : h7
As per DIN 6539

Solid Carbide Stub Drills



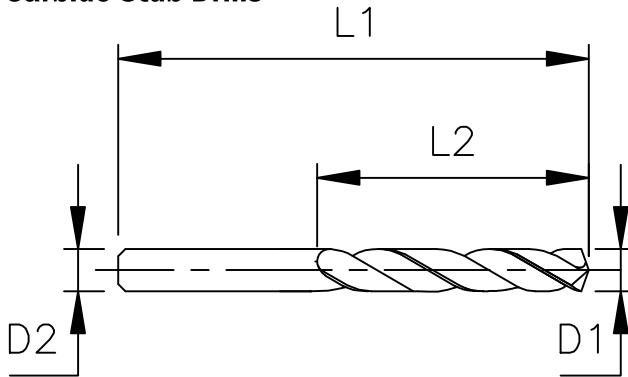
SERIES : HDRMI

| ITEM CODE | DIA (D1) | SH. DIA (D2) | FL (L2) | OAL (L1) |
|--------------|----------|--------------|---------|----------|
| HDRP030MINIC | 3 | 3 | 16 | 46 |
| HDRP031MINIC | 3.1 | 3.1 | 18 | 49 |
| HDRP032MINIC | 3.2 | 3.2 | 18 | 49 |
| HDRP033MINIC | 3.3 | 3.3 | 18 | 49 |
| HDRP034MINIC | 3.4 | 3.4 | 20 | 52 |
| HDRP035MINIC | 3.5 | 3.5 | 20 | 52 |
| HDRP036MINIC | 3.6 | 3.6 | 20 | 52 |
| HDRP037MINIC | 3.7 | 3.7 | 20 | 52 |
| HDRP038MINIC | 3.8 | 3.8 | 22 | 55 |
| HDRP039MINIC | 3.9 | 3.9 | 22 | 55 |
| HDRP040MINIC | 4 | 4 | 22 | 55 |
| HDRP041MINIC | 4.1 | 4.1 | 22 | 55 |
| HDRP042MINIC | 4.2 | 4.2 | 22 | 55 |
| HDRP043MINIC | 4.3 | 4.3 | 24 | 58 |
| HDRP044MINIC | 4.4 | 4.4 | 24 | 58 |
| HDRP045MINIC | 4.5 | 4.5 | 24 | 58 |
| HDRP046MINIC | 4.6 | 4.6 | 24 | 58 |
| HDRP047MINIC | 4.7 | 4.7 | 24 | 58 |
| HDRP048MINIC | 4.8 | 4.8 | 26 | 62 |
| HDRP049MINIC | 4.9 | 4.9 | 26 | 62 |
| HDRP050MINIC | 5 | 5 | 26 | 62 |
| HDRP051MINIC | 5.1 | 5.1 | 26 | 62 |
| HDRP052MINIC | 5.2 | 5.2 | 26 | 62 |
| HDRP053MINIC | 5.3 | 5.3 | 26 | 62 |
| HDRP054MINIC | 5.4 | 5.4 | 28 | 66 |
| HDRP055MINIC | 5.5 | 5.5 | 28 | 66 |
| HDRP056MINIC | 5.6 | 5.6 | 28 | 66 |
| HDRP057MINIC | 5.7 | 5.7 | 28 | 66 |



Drill Dia Tol : h7
As per DIN 6539

Solid Carbide Stub Drills



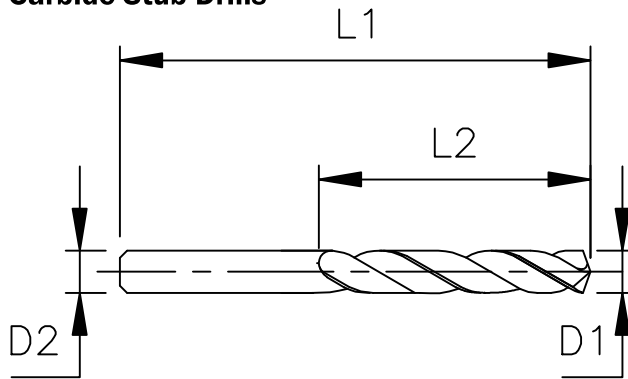
SERIES : HDRMI

| ITEM CODE | DIA (D1) | SH.DIA (D2) | FL (L2) | OAL (L1) |
|--------------|----------|-------------|---------|----------|
| HDRP058MINIC | 5.8 | 5.8 | 28 | 66 |
| HDRP059MINIC | 5.9 | 5.9 | 28 | 66 |
| HDRP060MINIC | 6 | 6 | 28 | 66 |
| HDRP061MINIC | 6.1 | 6.1 | 31 | 70 |
| HDRP062MINIC | 6.2 | 6.2 | 31 | 70 |
| HDRP063MINIC | 6.3 | 6.3 | 31 | 70 |
| HDRP064MINIC | 6.4 | 6.4 | 31 | 70 |
| HDRP065MINIC | 6.5 | 6.5 | 31 | 70 |
| HDRP066MINIC | 6.6 | 6.6 | 31 | 70 |
| HDRP067MINIC | 6.7 | 6.7 | 31 | 70 |
| HDRP068MINIC | 6.8 | 6.8 | 34 | 74 |
| HDRP069MINIC | 6.9 | 6.9 | 34 | 74 |
| HDRP070MINIC | 7 | 7 | 34 | 74 |
| HDRP071MINIC | 7.1 | 7.1 | 34 | 74 |
| HDRP072MINIC | 7.2 | 7.2 | 34 | 74 |
| HDRP073MINIC | 7.3 | 7.3 | 34 | 74 |
| HDRP074MINIC | 7.4 | 7.4 | 34 | 74 |
| HDRP075MINIC | 7.5 | 7.5 | 34 | 74 |
| HDRP076MINIC | 7.6 | 7.6 | 37 | 79 |
| HDRP077MINIC | 7.7 | 7.7 | 37 | 79 |
| HDRP078MINIC | 7.8 | 7.8 | 37 | 79 |
| HDRP079MINIC | 7.9 | 7.9 | 37 | 79 |
| HDRP080MINIC | 8 | 8 | 37 | 79 |
| HDRP081MINIC | 8.1 | 8.1 | 37 | 79 |
| HDRP082MINIC | 8.2 | 8.2 | 37 | 79 |
| HDRP083MINIC | 8.3 | 8.3 | 37 | 79 |
| HDRP084MINIC | 8.4 | 8.4 | 37 | 79 |
| HDRP085MINIC | 8.5 | 8.5 | 37 | 79 |



Drill Dia Tol : h7
As per DIN 6539

Solid Carbide Stub Drills

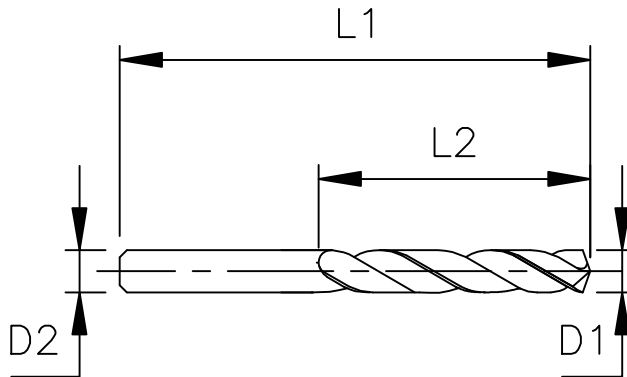


SERIES : HDRMI

| ITEM CODE | DIA (D1) | SH.DIA (D2) | FL (L2) | OAL (L1) |
|--------------|----------|-------------|---------|----------|
| HDRP086MINIC | 8.6 | 8.6 | 40 | 84 |
| HDRP087MINIC | 8.7 | 8.7 | 40 | 84 |
| HDRP088MINIC | 8.8 | 8.8 | 40 | 84 |
| HDRP030MINIC | 8.9 | 8.9 | 40 | 84 |
| HDRP090MINIC | 9 | 9 | 40 | 84 |
| HDRP091MINIC | 9.1 | 9.1 | 40 | 84 |
| HDRP092MINIC | 9.2 | 9.2 | 40 | 84 |
| HDRP093MINIC | 9.3 | 9.3 | 40 | 84 |
| HDRP094MINIC | 9.4 | 9.4 | 40 | 84 |
| HDRP095MINIC | 9.5 | 9.5 | 40 | 84 |
| HDRP096MINIC | 9.6 | 9.6 | 43 | 89 |
| HDRP097MINIC | 9.7 | 9.7 | 43 | 89 |
| HDRP098MINIC | 9.8 | 9.8 | 43 | 89 |
| HDRP099MINIC | 9.9 | 9.9 | 43 | 89 |
| HDRP100MINIC | 10 | 10 | 43 | 89 |
| HDRP102MINIC | 10.2 | 10.2 | 43 | 89 |
| HDRP103MINIC | 10.5 | 10.5 | 43 | 89 |
| HDRP108MINIC | 10.8 | 10.8 | 47 | 95 |
| HDRP110MINIC | 11 | 11 | 47 | 95 |
| HDRP115MINIC | 11.5 | 11.5 | 47 | 95 |
| HDRP118MINIC | 11.8 | 11.8 | 47 | 95 |
| HDRP120MINIC | 12 | 12 | 51 | 102 |
| HDRP125MINIC | 12.5 | 12.5 | 51 | 102 |
| HDRP130MINIC | 13 | 13 | 51 | 102 |
| HDRP135MINIC | 13.5 | 13.5 | 54 | 107 |
| HDRP140MINIC | 14 | 14 | 54 | 107 |
| HDRP145MINIC | 14.5 | 14.5 | 56 | 111 |
| HDRP150MINIC | 15 | 15 | 56 | 111 |



Drill Dia Tol : h7
As per DIN 6539



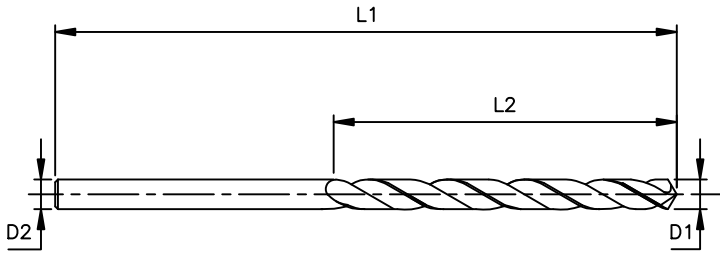
SERIES : HDRMI

| ITEM CODE | DIA (D1) | SH.DIA (D2) | FL (L2) | OAL (L1) |
|--------------|-------------|----------------|------------|-------------|
| HDRP155MINIC | 15.5 | 15.5 | 58 | 115 |
| HDRP160MINIC | 16 | 16 | 58 | 115 |
| HDRP165MINIC | 16.5 | 16.5 | 60 | 119 |
| HDRP170MINIC | 17 | 17 | 60 | 119 |
| HDRP175MINIC | 17.5 | 17.5 | 62 | 123 |
| HDRP180MINIC | 18 | 18 | 62 | 123 |
| HDRP185MINIC | 18.5 | 18.5 | 64 | 127 |
| HDRP190MINIC | 19 | 19 | 64 | 127 |
| HDRP195MINIC | 19.5 | 19.5 | 66 | 131 |
| HDRP200MINIC | 20 | 20 | 66 | 131 |



Drill Dia Tol : h7
As per DIN 6539

Solid Carbide Jobber Drills



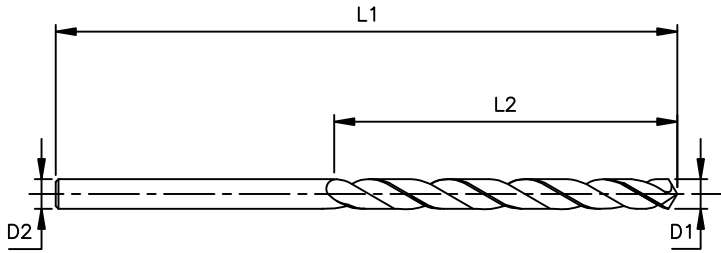
SERIES : HDRPJ

| ITEM CODE | DIA (D1) | SH.DIA (D2) | FL (L2) | OAL (L1) |
|------------|----------|-------------|---------|----------|
| HDRP010J5C | 1 | 1 | 12 | 34 |
| HDRP011J5C | 1.1 | 1.1 | 14 | 36 |
| HDRP012J5C | 1.2 | 1.2 | 16 | 38 |
| HDRP013J5C | 1.3 | 1.3 | 16 | 38 |
| HDRP014J5C | 1.4 | 1.4 | 18 | 40 |
| HDRP015J5C | 1.5 | 1.5 | 18 | 40 |
| HDRP016J5C | 1.6 | 1.6 | 20 | 43 |
| HDRP017J5C | 1.7 | 1.7 | 20 | 43 |
| HDRP018J5C | 1.8 | 1.8 | 22 | 46 |
| HDRP019J5C | 1.9 | 1.9 | 22 | 46 |
| HDRP020J5C | 2 | 2 | 24 | 49 |
| HDRP021J5C | 2.1 | 2.1 | 24 | 49 |
| HDRP022J5C | 2.2 | 2.2 | 27 | 53 |
| HDRP023J5C | 2.3 | 2.3 | 27 | 53 |
| HDRP024J5C | 2.4 | 2.4 | 30 | 57 |
| HDRP025J5C | 2.5 | 2.5 | 30 | 57 |
| HDRP026J5C | 2.6 | 2.6 | 30 | 57 |
| HDRP027J5C | 2.7 | 2.7 | 33 | 61 |
| HDRP028J5C | 2.8 | 2.8 | 33 | 61 |
| HDRP029J5C | 2.9 | 2.9 | 33 | 61 |
| HDRP030J5C | 3 | 3 | 33 | 61 |
| HDRP031J5C | 3.1 | 3.1 | 36 | 65 |
| HDRP032J5C | 3.2 | 3.2 | 36 | 65 |
| HDRP033J5C | 3.3 | 3.3 | 36 | 65 |
| HDRP034J5C | 3.4 | 3.4 | 39 | 70 |
| HDRP035J5C | 3.5 | 3.5 | 39 | 70 |
| HDRP036J5C | 3.6 | 3.6 | 39 | 70 |
| HDRP037J5C | 3.7 | 3.7 | 39 | 70 |



Drill Dia Tol : h7
As per DIN 338

Solid Carbide Jobber Drills



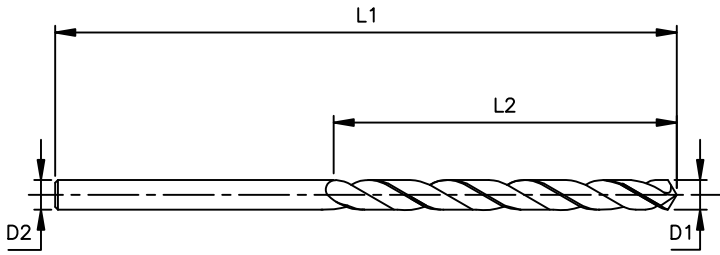
SERIES : HDRPJ

| ITEM CODE | DIA (D1) | SH.DIA (D2) | FL (L2) | OAL (L1) |
|------------|----------|-------------|---------|----------|
| HDRP038J5C | 3.8 | 3.8 | 43 | 75 |
| HDRP039J5C | 3.9 | 3.9 | 43 | 75 |
| HDRP040J5C | 4 | 4 | 43 | 75 |
| HDRP041J5C | 4.1 | 4.1 | 43 | 75 |
| HDRP042J5C | 4.2 | 4.2 | 43 | 75 |
| HDRP043J5C | 4.3 | 4.3 | 47 | 80 |
| HDRP044J5C | 4.4 | 4.4 | 47 | 80 |
| HDRP045J5C | 4.5 | 4.5 | 47 | 80 |
| HDRP046J5C | 4.6 | 4.6 | 47 | 80 |
| HDRP047J5C | 4.7 | 4.7 | 47 | 80 |
| HDRP048J5C | 4.8 | 4.8 | 52 | 86 |
| HDRP049J5C | 4.9 | 4.9 | 52 | 86 |
| HDRP050J5C | 5 | 5 | 52 | 86 |
| HDRP051J5C | 5.1 | 5.1 | 52 | 86 |
| HDRP052J5C | 5.2 | 5.2 | 52 | 86 |
| HDRP053J5C | 5.3 | 5.3 | 52 | 86 |
| HDRP054J5C | 5.4 | 5.4 | 57 | 93 |
| HDRP055J5C | 5.5 | 5.5 | 57 | 93 |
| HDRP056J5C | 5.6 | 5.6 | 57 | 93 |
| HDRP057J5C | 5.7 | 5.7 | 57 | 93 |
| HDRP058J5C | 5.8 | 5.8 | 57 | 93 |
| HDRP059J5C | 5.9 | 5.9 | 57 | 93 |
| HDRP060J5C | 6 | 6 | 57 | 93 |
| HDRP061J5C | 6.1 | 6.1 | 63 | 101 |
| HDRP062J5C | 6.2 | 6.2 | 63 | 101 |
| HDRP063J5C | 6.3 | 6.3 | 63 | 101 |
| HDRP064J5C | 6.4 | 6.4 | 63 | 101 |
| HDRP065J5C | 6.5 | 6.5 | 63 | 101 |



Drill Dia Tol : h7
As per DIN 338

Solid Carbide Jobber Drills



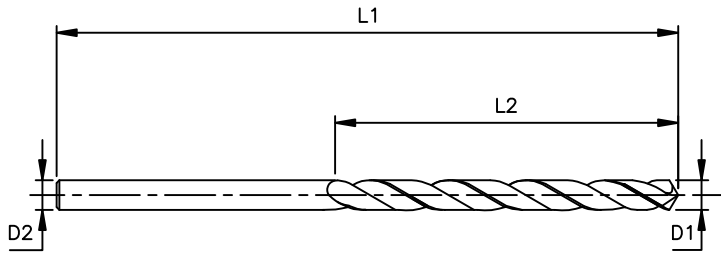
SERIES : HDRPJ

| ITEM CODE | DIA (D1) | SH.DIA (D2) | FL (L2) | OAL (L1) |
|------------|-------------|----------------|------------|-------------|
| HDRP066J5C | 6.6 | 6.6 | 63 | 101 |
| HDRP067J5C | 6.7 | 6.7 | 63 | 101 |
| HDRP068J5C | 6.8 | 6.8 | 69 | 109 |
| HDRP069J5C | 6.9 | 6.9 | 69 | 109 |
| HDRP070J5C | 7 | 7 | 69 | 109 |
| HDRP071J5C | 7.1 | 7.1 | 69 | 109 |
| HDRP072J5C | 7.2 | 7.2 | 69 | 109 |
| HDRP073J5C | 7.3 | 7.3 | 69 | 109 |
| HDRP074J5C | 7.4 | 7.4 | 69 | 109 |
| HDRP075J5C | 7.5 | 7.5 | 69 | 109 |
| HDRP076J5C | 7.6 | 7.6 | 75 | 117 |
| HDRP077J5C | 7.7 | 7.7 | 75 | 117 |
| HDRP078J5C | 7.8 | 7.8 | 75 | 117 |
| HDRP079J5C | 7.9 | 7.9 | 75 | 117 |
| HDRP080J5C | 8 | 8 | 75 | 117 |
| HDRP081J5C | 8.1 | 8.1 | 75 | 117 |
| HDRP082J5C | 8.2 | 8.2 | 75 | 117 |
| HDRP083J5C | 8.3 | 8.3 | 75 | 117 |
| HDRP084J5C | 8.4 | 8.4 | 75 | 117 |
| HDRP085J5C | 8.5 | 8.5 | 75 | 117 |
| HDRP086J5C | 8.6 | 8.6 | 81 | 125 |
| HDRP087J5C | 8.7 | 8.7 | 81 | 125 |
| HDRP088J5C | 8.8 | 8.8 | 81 | 125 |
| HDRP089J5C | 8.9 | 8.9 | 81 | 125 |
| HDRP090J5C | 9 | 9 | 81 | 125 |
| HDRP091J5C | 9.1 | 9.1 | 81 | 125 |
| HDRP092J5C | 9.2 | 9.2 | 81 | 125 |
| HDRP093J5C | 9.3 | 9.3 | 81 | 125 |



Drill Dia Tol : h7
As per DIN 338

Solid Carbide Jobber Drills



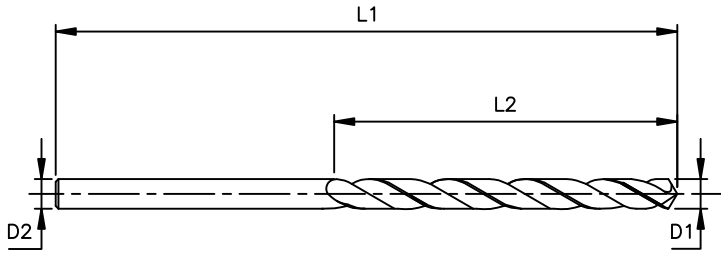
SERIES : HDRPJ

| ITEM CODE | DIA (D1) | SH.DIA (D2) | FL (L2) | OAL (L1) |
|------------|----------|-------------|---------|----------|
| HDRP094J5C | 9.4 | 9.4 | 81 | 125 |
| HDRP095J5C | 9.5 | 9.5 | 81 | 125 |
| HDRP096J5C | 9.6 | 9.6 | 87 | 133 |
| HDRP097J5C | 9.7 | 9.7 | 87 | 133 |
| HDRP098J5C | 9.8 | 9.8 | 87 | 133 |
| HDRP099J5C | 9.9 | 9.9 | 87 | 133 |
| HDRP100J5C | 10 | 10 | 87 | 133 |
| HDRP101J5C | 10.1 | 10.1 | 87 | 133 |
| HDRP102J5C | 10.2 | 10.2 | 87 | 133 |
| HDRP103J5C | 10.3 | 10.3 | 87 | 133 |
| HDRP104J5C | 10.4 | 10.4 | 87 | 133 |
| HDRP105J5C | 10.5 | 10.5 | 87 | 133 |
| HDRP106J5C | 10.6 | 10.6 | 87 | 133 |
| HDRP107J5C | 10.7 | 10.7 | 94 | 142 |
| HDRP108J5C | 10.8 | 10.8 | 94 | 142 |
| HDRP109J5C | 10.9 | 10.9 | 94 | 142 |
| HDRP110J5C | 11 | 11 | 94 | 142 |
| HDRP111J5C | 11.1 | 11.1 | 94 | 142 |
| HDRP112J5C | 11.2 | 11.2 | 94 | 142 |
| HDRP113J5C | 11.3 | 11.3 | 94 | 142 |
| HDRP114J5C | 11.4 | 11.4 | 94 | 142 |
| HDRP115J5C | 11.5 | 11.5 | 94 | 142 |
| HDRP116J5C | 11.6 | 11.6 | 94 | 142 |
| HDRP117J5C | 11.7 | 11.7 | 94 | 142 |
| HDRP118J5C | 11.8 | 11.8 | 94 | 142 |
| HDRP119J5C | 11.9 | 11.9 | 101 | 151 |
| HDRP120J5C | 12 | 12 | 101 | 151 |
| HDRP121J5C | 12.1 | 12.1 | 101 | 151 |



Drill Dia Tol : h7
As per DIN 338

Solid Carbide Jobber Drills



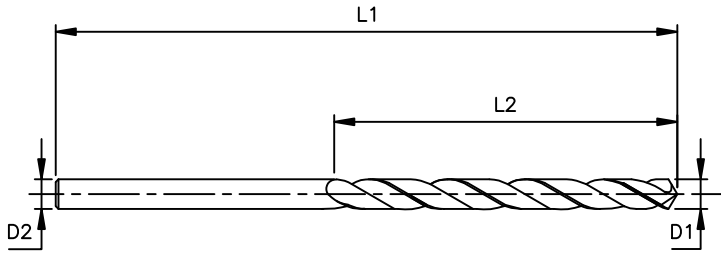
SERIES : HDRPJ

| ITEM CODE | DIA (D1) | SH.DIA (D2) | FL (L2) | OAL (L1) |
|------------|----------|-------------|---------|----------|
| HDRP122J5C | 12.2 | 12.2 | 101 | 151 |
| HDRP123J5C | 12.3 | 12.3 | 101 | 151 |
| HDRP124J5C | 12.4 | 12.4 | 101 | 151 |
| HDRP125J5C | 12.5 | 12.5 | 101 | 151 |
| HDRP126J5C | 12.6 | 12.6 | 101 | 151 |
| HDRP127J5C | 12.7 | 12.7 | 101 | 151 |
| HDRP128J5C | 12.8 | 12.8 | 101 | 151 |
| HDRP129J5C | 12.9 | 12.9 | 101 | 151 |
| HDRP130J5C | 13 | 13 | 101 | 151 |
| HDRP131J5C | 13.1 | 13.1 | 101 | 151 |
| HDRP132J5C | 13.2 | 13.2 | 101 | 151 |
| HDRP133J5C | 13.3 | 13.3 | 108 | 160 |
| HDRP134J5C | 13.4 | 13.4 | 108 | 160 |
| HDRP135J5C | 13.5 | 13.5 | 108 | 160 |
| HDRP136J5C | 13.6 | 13.6 | 108 | 160 |
| HDRP137J5C | 13.7 | 13.7 | 108 | 160 |
| HDRP138J5C | 13.8 | 13.8 | 108 | 160 |
| HDRP139J5C | 13.9 | 13.9 | 108 | 160 |
| HDRP140J5C | 14 | 14 | 108 | 160 |
| HDRP141J5C | 14.1 | 14.1 | 114 | 169 |
| HDRP142J5C | 14.2 | 14.2 | 114 | 169 |
| HDRP143J5C | 14.3 | 14.3 | 114 | 169 |
| HDRP144J5C | 14.4 | 14.4 | 114 | 169 |
| HDRP145J5C | 14.5 | 14.5 | 114 | 169 |
| HDRP146J5C | 14.6 | 14.6 | 114 | 169 |
| HDRP147J5C | 14.7 | 14.7 | 114 | 169 |
| HDRP148J5C | 14.8 | 14.8 | 114 | 169 |
| HDRP149J5C | 14.9 | 14.9 | 114 | 169 |



Drill Dia Tol : h7
As per DIN 338

Solid Carbide Jobber Drills



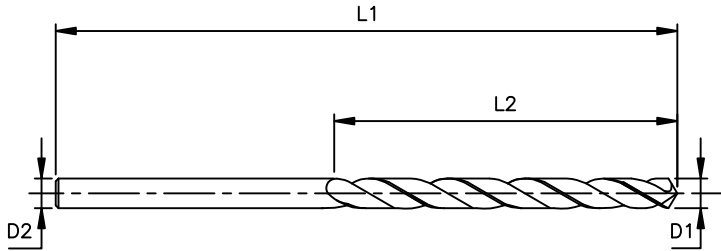
SERIES : HDRPJ

| ITEM CODE | DIA (D1) | SH.DIA (D2) | FL (L2) | OAL (L1) |
|------------|----------|-------------|---------|----------|
| HDRP150J5C | 15 | 15 | 114 | 169 |
| HDRP151J5C | 15.1 | 15.1 | 120 | 178 |
| HDRP152J5C | 15.2 | 15.2 | 120 | 178 |
| HDRP153J5C | 15.3 | 15.3 | 120 | 178 |
| HDRP154J5C | 15.4 | 15.4 | 120 | 178 |
| HDRP155J5C | 15.5 | 15.5 | 120 | 178 |
| HDRP156J5C | 15.6 | 15.6 | 120 | 178 |
| HDRP157J5C | 15.7 | 15.7 | 120 | 178 |
| HDRP158J5C | 15.8 | 15.8 | 120 | 178 |
| HDRP159J5C | 15.9 | 15.9 | 120 | 178 |
| HDRP160J5C | 16 | 16 | 120 | 178 |
| HDRP161J5C | 16.1 | 16.1 | 125 | 184 |
| HDRP162J5C | 16.2 | 16.2 | 125 | 184 |
| HDRP163J5C | 16.3 | 16.3 | 125 | 184 |
| HDRP164J5C | 16.4 | 16.4 | 125 | 184 |
| HDRP165J5C | 16.5 | 16.5 | 125 | 184 |
| HDRP166J5C | 16.6 | 16.6 | 125 | 184 |
| HDRP167J5C | 16.7 | 16.7 | 125 | 184 |
| HDRP168J5C | 16.8 | 16.8 | 125 | 184 |
| HDRP169J5C | 16.9 | 16.9 | 125 | 184 |
| HDRP170J5C | 17 | 17 | 125 | 184 |
| HDRP171J5C | 17.1 | 17.1 | 130 | 191 |
| HDRP172J5C | 17.2 | 17.2 | 130 | 191 |
| HDRP173J5C | 17.3 | 17.3 | 130 | 191 |
| HDRP174J5C | 17.4 | 17.4 | 130 | 191 |
| HDRP175J5C | 17.5 | 17.5 | 130 | 191 |
| HDRP176J5C | 17.6 | 17.6 | 130 | 191 |
| HDRP177J5C | 17.7 | 17.7 | 130 | 191 |



Drill Dia Tol : h7
As per DIN 338

Solid Carbide Jobber Drills



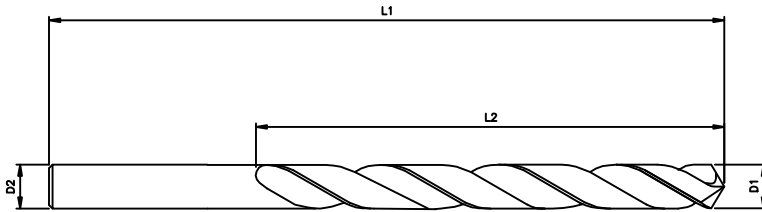
SERIES : HDRPJ

| ITEM CODE | DIA (D1) | SH.DIA (D2) | FL (L2) | OAL (L1) |
|------------|----------|-------------|---------|----------|
| HDRP178J5C | 17.8 | 17.8 | 130 | 191 |
| HDRP179J5C | 17.9 | 17.9 | 130 | 191 |
| HDRP180J5C | 18 | 18 | 130 | 191 |
| HDRP181J5C | 18.1 | 18.1 | 135 | 198 |
| HDRP182J5C | 18.2 | 18.2 | 135 | 198 |
| HDRP183J5C | 18.3 | 18.3 | 135 | 198 |
| HDRP184J5C | 18.4 | 18.4 | 135 | 198 |
| HDRP185J5C | 18.5 | 18.5 | 135 | 198 |
| HDRP186J5C | 18.6 | 18.6 | 135 | 198 |
| HDRP187J5C | 18.7 | 18.7 | 135 | 198 |
| HDRP188J5C | 18.8 | 18.8 | 135 | 198 |
| HDRP189J5C | 18.9 | 18.9 | 135 | 198 |
| HDRP190J5C | 19 | 19 | 135 | 198 |
| HDRP191J5C | 19.1 | 19.1 | 140 | 205 |
| HDRP192J5C | 19.2 | 19.2 | 140 | 205 |
| HDRP193J5C | 19.3 | 19.3 | 140 | 205 |
| HDRP194J5C | 19.4 | 19.4 | 140 | 205 |
| HDRP195J5C | 19.5 | 19.5 | 140 | 205 |
| HDRP196J5C | 19.6 | 19.6 | 140 | 205 |
| HDRP197J5C | 19.7 | 19.7 | 140 | 205 |
| HDRP198J5C | 19.8 | 19.8 | 140 | 205 |
| HDRP199J5C | 19.9 | 19.9 | 140 | 205 |
| HDRP200J5C | 20 | 20 | 140 | 205 |



Drill Dia Tol : h7
As per DIN 338

Solid Carbide Jobber High Performance Drills



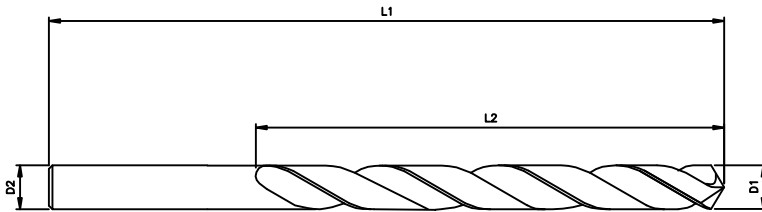
SERIES : HDRJN

| ITEM CODE | DIA (D1) | SH.DIA (D2) | FL (L2) | OAL (L1) |
|-------------|----------|-------------|---------|----------|
| HDRP030J5NC | 3 | 3 | 33 | 61 |
| HDRP031J5NC | 3.1 | 3.1 | 36 | 65 |
| HDRP032J5NC | 3.2 | 3.2 | 36 | 65 |
| HDRP033J5NC | 3.3 | 3.3 | 36 | 65 |
| HDRP034J5NC | 3.4 | 3.4 | 39 | 70 |
| HDRP035J5NC | 3.5 | 3.5 | 39 | 70 |
| HDRP036J5NC | 3.6 | 3.6 | 39 | 70 |
| HDRP037J5NC | 3.7 | 3.7 | 39 | 70 |
| HDRP038J5NC | 3.8 | 3.8 | 43 | 75 |
| HDRP039J5NC | 3.9 | 3.9 | 43 | 75 |
| HDRP040J5NC | 4 | 4 | 43 | 75 |
| HDRP041J5NC | 4.1 | 4.1 | 43 | 75 |
| HDRP042J5NC | 4.2 | 4.2 | 43 | 75 |
| HDRP043J5NC | 4.3 | 4.3 | 47 | 80 |
| HDRP044J5NC | 4.4 | 4.4 | 47 | 80 |
| HDRP045J5NC | 4.5 | 4.5 | 47 | 80 |
| HDRP046J5NC | 4.6 | 4.6 | 47 | 80 |
| HDRP047J5NC | 4.7 | 4.7 | 47 | 80 |
| HDRP048J5NC | 4.8 | 4.8 | 52 | 86 |
| HDRP049J5NC | 4.9 | 4.9 | 52 | 86 |
| HDRP050J5NC | 5 | 5 | 52 | 86 |
| HDRP051J5NC | 5.1 | 5.1 | 52 | 86 |
| HDRP052J5NC | 5.2 | 5.2 | 52 | 86 |
| HDRP053J5NC | 5.3 | 5.3 | 52 | 86 |
| HDRP054J5NC | 5.4 | 5.4 | 57 | 93 |
| HDRP055J5NC | 5.5 | 5.5 | 57 | 93 |
| HDRP056J5NC | 5.6 | 5.6 | 57 | 93 |
| HDRP057J5NC | 5.7 | 5.7 | 57 | 93 |
| HDRP058J5NC | 5.8 | 5.8 | 57 | 93 |



Drill Dia Tol : h7
As per DIN 338

Solid Carbide Jobber High Performance Drills



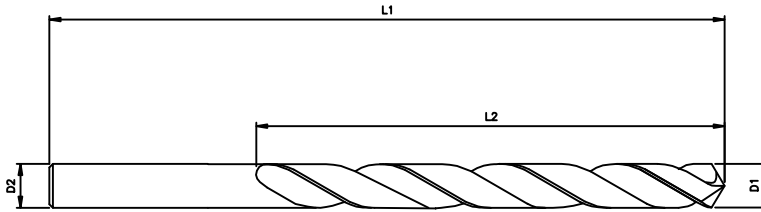
SERIES : HDRJN

| ITEM CODE | DIA (D1) | SH.DIA (D2) | FL (L2) | OAL (L1) |
|-------------|----------|-------------|---------|----------|
| HDRP059J5NC | 5.9 | 5.9 | 57 | 93 |
| HDRP060J5NC | 6 | 6 | 57 | 93 |
| HDRP061J5NC | 6.1 | 6.1 | 63 | 101 |
| HDRP062J5NC | 6.2 | 6.2 | 63 | 101 |
| HDRP063J5NC | 6.3 | 6.3 | 63 | 101 |
| HDRP064J5NC | 6.4 | 6.4 | 63 | 101 |
| HDRP065J5NC | 6.5 | 6.5 | 63 | 101 |
| HDRP066J5NC | 6.6 | 6.6 | 63 | 101 |
| HDRP067J5NC | 6.7 | 6.7 | 63 | 101 |
| HDRP068J5NC | 6.8 | 6.8 | 69 | 109 |
| HDRP069J5NC | 6.9 | 6.9 | 69 | 109 |
| HDRP070J5NC | 7 | 7 | 69 | 109 |
| HDRP071J5NC | 7.1 | 7.1 | 69 | 109 |
| HDRP072J5NC | 7.2 | 7.2 | 69 | 109 |
| HDRP073J5NC | 7.3 | 7.3 | 69 | 109 |
| HDRP074J5NC | 7.4 | 7.4 | 69 | 109 |
| HDRP075J5NC | 7.5 | 7.5 | 69 | 109 |
| HDRP076J5NC | 7.6 | 7.6 | 75 | 117 |
| HDRP077J5NC | 7.7 | 7.7 | 75 | 117 |
| HDRP078J5NC | 7.8 | 7.8 | 75 | 117 |
| HDRP079J5NC | 7.9 | 7.9 | 75 | 117 |
| HDRP080J5NC | 8 | 8 | 75 | 117 |
| HDRP081J5NC | 8.1 | 8.1 | 75 | 117 |
| HDRP082J5NC | 8.2 | 8.2 | 75 | 117 |
| HDRP083J5NC | 8.3 | 8.3 | 75 | 117 |
| HDRP084J5NC | 8.4 | 8.4 | 75 | 117 |
| HDRP085J5NC | 8.5 | 8.5 | 75 | 117 |
| HDRP086J5NC | 8.6 | 8.6 | 81 | 125 |
| HDRP087J5NC | 8.7 | 8.7 | 81 | 125 |



Drill Dia Tol : h7
As per DIN 338

Solid Carbide Jobber High Performance Drills



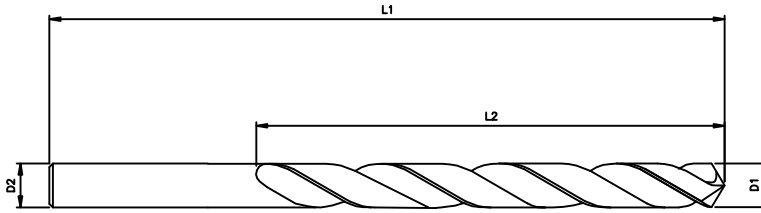
SERIES : HDRJN

| ITEM CODE | DIA (D1) | SH.DIA (D2) | FL (L2) | OAL (L1) |
|-------------|----------|-------------|---------|----------|
| HDRP088J5NC | 8.8 | 8.8 | 81 | 125 |
| HDRP089J5NC | 8.9 | 8.9 | 81 | 125 |
| HDRP090J5NC | 9 | 9 | 81 | 125 |
| HDRP091J5NC | 9.1 | 9.1 | 81 | 125 |
| HDRP092J5NC | 9.2 | 9.2 | 81 | 125 |
| HDRP093J5NC | 9.3 | 9.3 | 81 | 125 |
| HDRP094J5NC | 9.4 | 9.4 | 81 | 125 |
| HDRP095J5NC | 9.5 | 9.5 | 81 | 125 |
| HDRP096J5NC | 9.6 | 9.6 | 87 | 133 |
| HDRP097J5NC | 9.7 | 9.7 | 87 | 133 |
| HDRP098J5NC | 9.8 | 9.8 | 87 | 133 |
| HDRP099J5NC | 9.9 | 9.9 | 87 | 133 |
| HDR100J5NC | 10 | 10 | 87 | 133 |
| HDR101J5NC | 10.1 | 10.1 | 87 | 133 |
| HDR102J5NC | 10.2 | 10.2 | 87 | 133 |
| HDR103J5NC | 10.3 | 10.3 | 87 | 133 |
| HDR104J5NC | 10.4 | 10.4 | 87 | 133 |
| HDR105J5NC | 10.5 | 10.5 | 87 | 133 |
| HDR106J5NC | 10.6 | 10.6 | 87 | 133 |
| HDR107J5NC | 10.7 | 10.7 | 94 | 142 |
| HDR108J5NC | 10.8 | 10.8 | 94 | 142 |
| HDR109J5NC | 10.9 | 10.9 | 94 | 142 |
| HDR110J5NC | 11 | 11 | 94 | 142 |
| HDR111J5NC | 11.1 | 11.1 | 94 | 142 |
| HDR112J5NC | 11.2 | 11.2 | 94 | 142 |
| HDR113J5NC | 11.3 | 11.3 | 94 | 142 |
| HDR114J5NC | 11.4 | 11.4 | 94 | 142 |
| HDR115J5NC | 11.5 | 11.5 | 94 | 142 |
| HDR116J5NC | 11.6 | 11.6 | 94 | 142 |



Drill Dia Tol : h7
As per DIN 338

Solid Carbide Jobber High Performance Drills



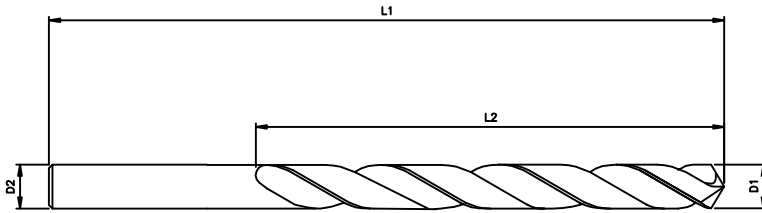
SERIES : HDRJN

| ITEM CODE | DIA (D1) | SH.DIA (D2) | FL (L2) | OAL (L1) |
|------------|-------------|----------------|------------|-------------|
| HDR116J5NC | 11.6 | 11.6 | 94 | 142 |
| HDR117J5NC | 11.7 | 11.7 | 94 | 142 |
| HDR118J5NC | 11.8 | 11.8 | 94 | 142 |
| HDR119J5NC | 11.9 | 11.9 | 101 | 151 |
| HDR120J5NC | 12 | 12 | 101 | 151 |
| HDR121J5NC | 12.1 | 12.1 | 101 | 151 |
| HDR122J5NC | 12.2 | 12.2 | 101 | 151 |
| HDR123J5NC | 12.3 | 12.3 | 101 | 151 |
| HDR124J5NC | 12.4 | 12.4 | 101 | 151 |
| HDR125J5NC | 12.5 | 12.5 | 101 | 151 |
| HDR126J5NC | 12.6 | 12.6 | 101 | 151 |
| HDR127J5NC | 12.7 | 12.7 | 101 | 151 |
| HDR128J5NC | 12.8 | 12.8 | 101 | 151 |
| HDR129J5NC | 12.9 | 12.9 | 101 | 151 |
| HDR130J5NC | 13 | 13 | 101 | 151 |
| HDR131J5NC | 13.1 | 13.1 | 101 | 151 |
| HDR132J5NC | 13.2 | 13.2 | 101 | 151 |
| HDR133J5NC | 13.3 | 13.3 | 108 | 160 |
| HDR134J5NC | 13.4 | 13.4 | 108 | 160 |
| HDR135J5NC | 13.5 | 13.5 | 108 | 160 |
| HDR136J5NC | 13.6 | 13.6 | 108 | 160 |
| HDR137J5NC | 13.7 | 13.7 | 108 | 160 |
| HDR138J5NC | 13.8 | 13.8 | 108 | 160 |
| HDR139J5NC | 13.9 | 13.9 | 108 | 160 |
| HDR140J5NC | 14 | 14 | 108 | 160 |
| HDR141J5NC | 14.1 | 14.1 | 114 | 169 |
| HDR142J5NC | 14.2 | 14.2 | 114 | 169 |
| HDR143J5NC | 14.3 | 14.3 | 114 | 169 |



Drill Dia Tol : h7
As per DIN 338

Solid Carbide Jobber High Performance Drills



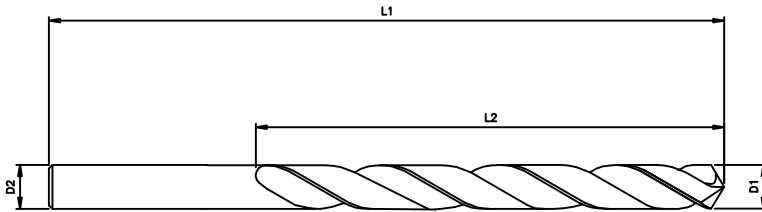
SERIES : HDRJN

| ITEM CODE | DIA (D1) | SH.DIA (D2) | FL (L2) | OAL (L1) |
|------------|----------|-------------|---------|----------|
| HDR144J5NC | 14.4 | 14.4 | 114 | 169 |
| HDR145J5NC | 14.5 | 14.5 | 114 | 169 |
| HDR146J5NC | 14.6 | 14.6 | 114 | 169 |
| HDR147J5NC | 14.7 | 14.7 | 114 | 169 |
| HDR148J5NC | 14.8 | 14.8 | 114 | 169 |
| HDR149J5NC | 14.9 | 14.9 | 114 | 169 |
| HDR150J5NC | 15 | 15 | 114 | 169 |
| HDR151J5NC | 15.1 | 15.1 | 120 | 178 |
| HDR152J5NC | 15.2 | 15.2 | 120 | 178 |
| HDR153J5NC | 15.3 | 15.3 | 120 | 178 |
| HDR154J5NC | 15.4 | 15.4 | 120 | 178 |
| HDR155J5NC | 15.5 | 15.5 | 120 | 178 |
| HDR156J5NC | 15.6 | 15.6 | 120 | 178 |
| HDR157J5NC | 15.7 | 15.7 | 120 | 178 |
| HDR158J5NC | 15.8 | 15.8 | 120 | 178 |
| HDR159J5NC | 15.9 | 15.9 | 120 | 178 |
| HDR160J5NC | 16 | 16 | 120 | 178 |
| HDR161J5NC | 16.1 | 16.1 | 125 | 184 |
| HDR162J5NC | 16.2 | 16.2 | 125 | 184 |
| HDR163J5NC | 16.3 | 16.3 | 125 | 184 |
| HDR164J5NC | 16.4 | 16.4 | 125 | 184 |
| HDR165J5NC | 16.5 | 16.5 | 125 | 184 |
| HDR166J5NC | 16.6 | 16.6 | 125 | 184 |
| HDR167J5NC | 16.7 | 16.7 | 125 | 184 |
| HDR168J5NC | 16.8 | 16.8 | 125 | 184 |
| HDR169J5NC | 16.9 | 16.9 | 125 | 184 |
| HDR170J5NC | 17 | 17 | 125 | 184 |
| HDR171J5NC | 17.1 | 17.1 | 130 | 191 |



Drill Dia Tol : h7
As per DIN 338

Solid Carbide Jobber High Performance Drills



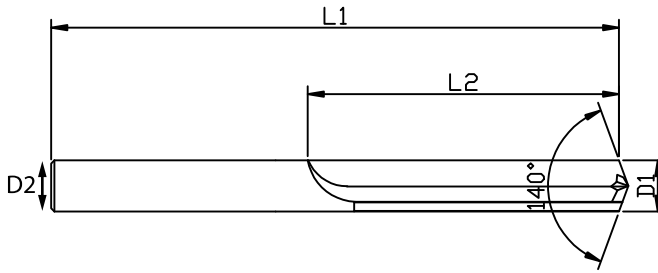
SERIES : HDRJN

| ITEM CODE | DIA (D1) | SH.DIA (D2) | FL (L2) | OAL (L1) |
|------------|-------------|----------------|------------|-------------|
| HDR172J5NC | 17.2 | 17.2 | 130 | 191 |
| HDR173J5NC | 17.3 | 17.3 | 130 | 191 |
| HDR174J5NC | 17.4 | 17.4 | 130 | 191 |
| HDR175J5NC | 17.5 | 17.5 | 130 | 191 |
| HDR176J5NC | 17.6 | 17.6 | 130 | 191 |
| HDR177J5NC | 17.7 | 17.7 | 130 | 191 |
| HDR178J5NC | 17.8 | 17.8 | 130 | 191 |
| HDR179J5NC | 17.9 | 17.9 | 130 | 191 |
| HDR180J5NC | 18 | 18 | 130 | 191 |
| HDR181J5NC | 18.1 | 18.1 | 135 | 198 |
| HDR182J5NC | 18.2 | 18.2 | 135 | 198 |
| HDR183J5NC | 18.3 | 18.3 | 135 | 198 |
| HDR184J5NC | 18.4 | 18.4 | 135 | 198 |
| HDR185J5NC | 18.5 | 18.5 | 135 | 198 |
| HDR186J5NC | 18.6 | 18.6 | 135 | 198 |
| HDR187J5NC | 18.7 | 18.7 | 135 | 198 |
| HDR188J5NC | 18.8 | 18.8 | 135 | 198 |
| HDR189J5NC | 18.9 | 18.9 | 135 | 198 |
| HDR190J5NC | 19 | 19 | 135 | 198 |
| HDR191J5NC | 19.1 | 19.1 | 140 | 205 |
| HDR192J5NC | 19.2 | 19.2 | 140 | 205 |
| HDR193J5NC | 19.3 | 19.3 | 140 | 205 |
| HDR194J5NC | 19.4 | 19.4 | 140 | 205 |
| HDR195J5NC | 19.5 | 19.5 | 140 | 205 |
| HDR196J5NC | 19.6 | 19.6 | 140 | 205 |
| HDR197J5NC | 19.7 | 19.7 | 140 | 205 |
| HDR198J5NC | 19.8 | 19.8 | 140 | 205 |
| HDR199J5NC | 19.9 | 19.9 | 140 | 205 |
| HDR200J5NC | 20 | 20 | 140 | 205 |



Drill Dia Tol : h7
As per DIN 338

Solid Carbide Straight Flute Drill - Metric

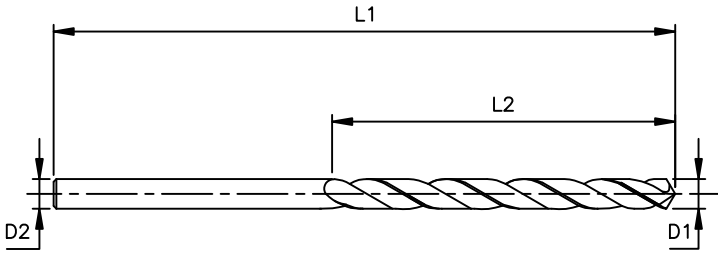


SERIES : HDRSFM

| ITEM CODE | DIA D1 | FL I2 | SH DIA. D2 | OAL L1 |
|---------------|-----------|----------|---------------|-----------|
| HDRSF015L13SP | 1.5 | 13 | 1.5 | 38 |
| HDRSF020L19SP | 2.0 | 19 | 2.0 | 44 |
| HDRSF025L21SP | 2.5 | 21 | 2.5 | 46 |
| HDRSF030L22SP | 3.0 | 22 | 3.0 | 48 |
| HDRSF035L24SP | 3.5 | 24 | 3.5 | 49 |
| HDRSF040L27SP | 4.0 | 27 | 4.0 | 54 |
| HDRSF045L29SP | 4.5 | 29 | 4.5 | 56 |
| HDRSF050L30SP | 5.0 | 30 | 5.0 | 57 |
| HDRSF055L32SP | 5.5 | 32 | 5.5 | 60 |
| HDRSF060L33SP | 6.0 | 33 | 6.0 | 62 |
| HDRSF065L35SP | 6.5 | 35 | 6.5 | 64 |
| HDRSF070L38SP | 7.0 | 38 | 7.0 | 68 |
| HDRSF075L40SP | 7.5 | 40 | 7.5 | 70 |
| HDRSF080L41SP | 8.0 | 41 | 8.0 | 71 |
| HDRSF085L43SP | 8.5 | 43 | 8.5 | 76 |
| HDRSF090L44SP | 9.0 | 44 | 9.0 | 78 |
| HDRSF095L46SP | 9.5 | 46 | 9.5 | 79 |
| HDRSF100L48SP | 10.0 | 48 | 10.0 | 83 |
| HDRSF105L51SP | 10.5 | 51 | 10.5 | 86 |
| HDRSF110L52SP | 11.0 | 52 | 11.0 | 87 |
| HDRSF115L54SP | 11.5 | 54 | 11.5 | 90 |
| HDRSF120L54SP | 12.0 | 54 | 12.0 | 92 |



Solid Carbide 15° Helix Drill - Metric

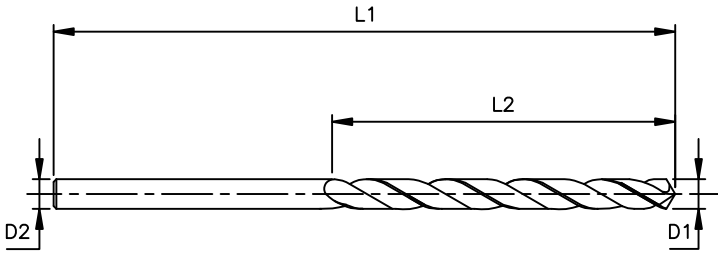


SERIES : HDR15M

| ITEM CODE | DIA D1 | FL L2 | SH DIA. D2 | OAL L1 |
|---------------|-----------|----------|---------------|-----------|
| HDR15015L38SP | 1.5 | 13 | 1.5 | 38 |
| HDR15020L44SP | 2.0 | 19 | 2.0 | 44 |
| HDR15025L46SP | 2.5 | 21 | 2.5 | 46 |
| HDR15030L48SP | 3.0 | 22 | 3.0 | 48 |
| HDR15035L49SP | 3.5 | 24 | 3.5 | 49 |
| HDR15040L54SP | 4.0 | 27 | 4.0 | 54 |
| HDR15045L56SP | 4.5 | 29 | 4.5 | 56 |
| HDR15050L57SP | 5.0 | 30 | 5.0 | 57 |
| HDR15055L60SP | 5.5 | 32 | 5.5 | 60 |
| HDR15060L62SP | 6.0 | 33 | 6.0 | 62 |
| HDR15065L64SP | 6.5 | 35 | 6.5 | 64 |
| HDR15070L68SP | 7.0 | 38 | 7.0 | 68 |
| HDR15075L70SP | 7.5 | 40 | 7.5 | 70 |
| HDR15080L71SP | 8.0 | 41 | 8.0 | 71 |
| HDR15085L76SP | 8.5 | 43 | 8.5 | 76 |
| HDR15090L78SP | 9.0 | 44 | 9.0 | 78 |
| HDR15095L79SP | 9.5 | 46 | 9.5 | 79 |
| HDR15100L83SP | 10.0 | 48 | 10.0 | 83 |
| HDR15105L86SP | 10.5 | 51 | 10.5 | 86 |
| HDR15110L87SP | 11.0 | 52 | 11.0 | 87 |
| HDR15115L90SP | 11.5 | 54 | 11.5 | 90 |
| HDR15120L92SP | 12.0 | 54 | 12.0 | 92 |



Solid Carbide 20° Helix Drill - Metric

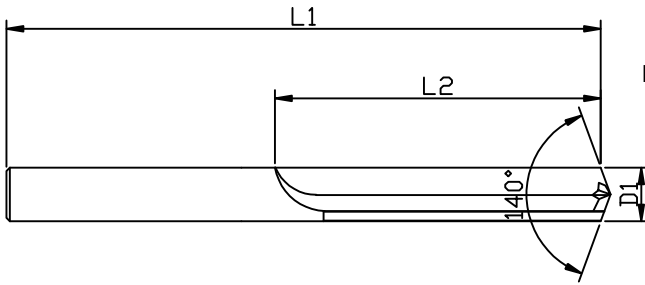


SERIES : HDR20M

| ITEM CODE | DIA D1 | FL I2 | SH DIA. D2 | OAL L1 |
|----------------|-----------|----------|---------------|-----------|
| HDR20015L038SP | 1.5 | 13 | 1.5 | 38 |
| HDR20020L044SP | 2.0 | 19 | 2.0 | 44 |
| HDR20025L051SP | 2.5 | 21 | 2.5 | 51 |
| HDR20030L057SP | 3.0 | 22 | 3.0 | 57 |
| HDR20035L064SP | 3.5 | 24 | 3.5 | 64 |
| HDR20040L064SP | 4.0 | 27 | 4.0 | 64 |
| HDR20045L070SP | 4.5 | 29 | 4.5 | 70 |
| HDR20050L076SP | 5.0 | 30 | 5.0 | 76 |
| HDR20055L076SP | 5.5 | 32 | 5.5 | 76 |
| HDR20060L083SP | 6.0 | 33 | 6.0 | 83 |
| HDR20065L083SP | 6.5 | 35 | 6.5 | 83 |
| HDR20070L089SP | 7.0 | 38 | 7.0 | 89 |
| HDR20075L092SP | 7.5 | 40 | 7.5 | 92 |
| HDR20080L092SP | 8.0 | 41 | 8.0 | 92 |
| HDR20085L102SP | 8.5 | 43 | 8.5 | 102 |
| HDR20090L102SP | 9.0 | 44 | 9.0 | 102 |
| HDR20095L108SP | 9.5 | 46 | 9.5 | 108 |
| HDR20100L114SP | 10.0 | 48 | 10.0 | 114 |
| HDR20105L114SP | 10.5 | 51 | 10.5 | 114 |
| HDR20110L114SP | 11.0 | 52 | 11.0 | 114 |
| HDR20115L121SP | 11.5 | 54 | 11.5 | 121 |
| HDR20120L121SP | 12.0 | 54 | 12.0 | 121 |



Solid Carbide Straight Flute Drill - Inch



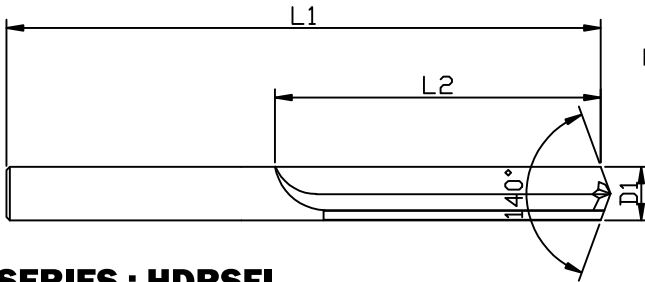
Application:
 Hardened, treated, and abrasive materials
 Stainless Steel
 Cryogenic alloys

SERIES : HDRSFI

| ITEM CODE | DIA D1 | DEC EQV | FL L2 | OAL L1 |
|------------|-----------|------------|----------|-----------|
| HDRSFD0465 | 56 | 0.0465 | 1/2 | 1-1/2 |
| HDRSFD0469 | 3/64 | 0.0469 | 1/2 | 1-1/2 |
| HDRSFD0520 | 55 | 0.0520 | 1/2 | 1-1/2 |
| HDRSFD0550 | 54 | 0.0550 | 1/2 | 1-1/2 |
| HDRSFD0595 | 53 | 0.0595 | 1/2 | 1-1/2 |
| HDRSFD0625 | 1/16 | 0.0625 | 5/8 | 1-5/8 |
| HDRSFD0635 | 52 | 0.0635 | 11/16 | 1-11/16 |
| HDRSFD0670 | 51 | 0.0670 | 11/16 | 1-11/16 |
| HDRSFD0700 | 50 | 0.0700 | 11/16 | 1-11/16 |
| HDRSFD0730 | 49 | 0.0730 | 11/16 | 1-11/16 |
| HDRSFD0760 | 48 | 0.0760 | 11/16 | 1-11/16 |
| HDRSFD0781 | 5/64 | 0.0781 | 11/16 | 1-11/16 |
| HDRSFD0785 | 47 | 0.0785 | 3/4 | 1-3/4 |
| HDRSFD0810 | 46 | 0.0810 | 3/4 | 1-3/4 |
| HDRSFD0820 | 45 | 0.0820 | 3/4 | 1-3/4 |
| HDRSFD0860 | 44 | 0.0860 | 3/4 | 1-3/4 |
| HDRSFD0890 | 43 | 0.0890 | 3/4 | 1-3/4 |
| HDRSFD0935 | 42 | 0.0935 | 3/4 | 1-3/4 |
| HDRSFD0938 | 3/32 | 0.0938 | 3/4 | 1-3/4 |
| HDRSFD0960 | 41 | 0.0960 | 13/16 | 1-13/16 |
| HDRSFD0980 | 40 | 0.0980 | 13/16 | 1-13/16 |
| HDRSFD0995 | 39 | 0.0995 | 13/16 | 1-13/16 |
| HDRSFD1015 | 38 | 0.1015 | 13/16 | 1-13/16 |
| HDRSFD1040 | 37 | 0.1040 | 13/16 | 1-13/16 |
| HDRSFD1065 | 36 | 0.1065 | 13/16 | 1-13/16 |
| HDRSFD1094 | 7/64 | 0.1094 | 13/16 | 1-13/16 |



Solid Carbide Straight Flute Drill - Inch



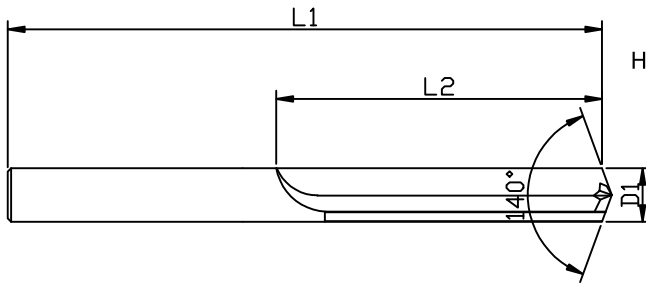
Application:
 Hardened, treated, and abrasive materials
 Stainless Steel
 Cryogenic alloys

SERIES : HDRSFI

| ITEM CODE | DIA D1 | DEC EQV | FL L2 | OAL L1 |
|------------|-----------|------------|----------|-----------|
| HDRSFD1100 | 35 | 0.1100 | 7/8 | 1-7/8 |
| HDRSFD1110 | 34 | 0.1110 | 7/8 | 1-7/8 |
| HDRSFD1130 | 33 | 0.1130 | 7/8 | 1-7/8 |
| HDRSFD1160 | 32 | 0.1160 | 7/8 | 1-7/8 |
| HDRSFD1200 | 31 | 0.1200 | 7/8 | 1-7/8 |
| HDRSFD1250 | 1/8 | 0.1250 | 7/8 | 1-7/8 |
| HDRSFD1285 | 30 | 0.1285 | 15/16 | 1-15/16 |
| HDRSFD1360 | 29 | 0.1360 | 15/16 | 1-15/16 |
| HDRSFD1405 | 28 | 0.1405 | 15/16 | 1-15/16 |
| HDRSFD1406 | 9/64 | 0.1406 | 15/16 | 1-15/16 |
| HDRSFD1440 | 27 | 0.1440 | 1 | 2-1/16 |
| HDRSFD1470 | 26 | 0.1470 | 1 | 2-1/16 |
| HDRSFD1495 | 25 | 0.1495 | 1 | 2-1/16 |
| HDRSFD1520 | 24 | 0.1520 | 1 | 2-1/16 |
| HDRSFD1540 | 23 | 0.1540 | 1 | 2-1/16 |
| HDRSFD1562 | 5/32 | 0.1562 | 1 | 2-1/16 |
| HDRSFD1570 | 22 | 0.1570 | 1-1/16 | 2-1/8 |
| HDRSFD1590 | 21 | 0.1590 | 1-1/16 | 2-1/8 |
| HDRSFD1610 | 20 | 0.1610 | 1-1/16 | 2-1/8 |
| HDRSFD1660 | 19 | 0.1660 | 1-1/16 | 2-1/8 |
| HDRSFD1695 | 18 | 0.1695 | 1-1/16 | 2-1/8 |
| HDRSFD1719 | 11/64 | 0.1719 | 1-1/16 | 2-1/8 |
| HDRSFD1730 | 17 | 0.1730 | 1-1/8 | 2-3/16 |
| HDRSFD1770 | 16 | 0.1770 | 1-1/8 | 2-3/16 |
| HDRSFD1800 | 15 | 0.1800 | 1-1/8 | 2-3/16 |



Solid Carbide Straight Flute Drill - Inch



Application:
 Hardened, treated, and abrasive materials
 Stainless Steel
 Cryogenic alloys

SERIES : HDRSFI

| ITEM CODE | DIA D1 | DEC EQV | FL L2 | OAL L1 |
|-------------|-----------|------------|----------|-----------|
| HDRSFD1820 | 14 | 0.1820 | 1-1/8 | 2-3/16 |
| HDRSFD1850 | 13 | 0.1850 | 1-1/8 | 2-3/16 |
| HDRSFD1875 | 3/16 | 0.1875 | 1-1/8 | 2-3/16 |
| HDRSFD1890 | 12 | 0.1890 | 1-3/16 | 2-1/4 |
| HDRSFD1910 | 11 | 0.1910 | 1-3/16 | 2-1/4 |
| HDRSFD1935 | 10 | 0.1935 | 1-3/16 | 2-1/4 |
| HDRSFD1960 | 9 | 0.1960 | 1-3/16 | 2-1/4 |
| HDRSFD1990 | 8 | 0.1990 | 1-3/16 | 2-1/4 |
| HDRSFD2010 | 7 | 0.2010 | 1-3/16 | 2-1/4 |
| HDRSFD2031 | 13/64 | 0.2031 | 1-3/16 | 2-1/4 |
| HDRSFD2040 | 6 | 0.2040 | 1-1/4 | 2-3/8 |
| HDRSFD2055 | 5 | 0.2055 | 1-1/4 | 2-3/8 |
| HDRSFD2090 | 4 | 0.2090 | 1-1/4 | 2-3/8 |
| HDRSFD2130 | 3 | 0.2130 | 1-1/4 | 2-3/8 |
| HDRSFD2188 | 7/32 | 0.2188 | 1-1/4 | 2-3/8 |
| HDRSFD2210 | 2 | 0.2210 | 1-5/16 | 2-7/16 |
| HDRSFD2280 | 1 | 0.2280 | 1-5/16 | 2-7/16 |
| HDRSFD2340 | A | 0.2340 | 1-5/16 | 2-7/16 |
| HDRSFD2344 | 15/64 | 0.2344 | 1-3/8 | 2-7/16 |
| HDRSFD2380 | B | 0.2380 | 1-3/8 | 2-1/2 |
| HDRSFD2420 | C | 0.2420 | 1-3/8 | 2-1/2 |
| HDRSFD2460 | D | 0.2460 | 1-3/8 | 2-1/2 |
| HDRSFD2500 | 1/4 | 0.2500 | 1-3/8 | 2-1/2 |
| HDRSFD2500E | E | 0.2500 | 1-3/8 | 2-1/2 |
| HDRSFD2570 | F | 0.2570 | 1-7/16 | 2-5/8 |



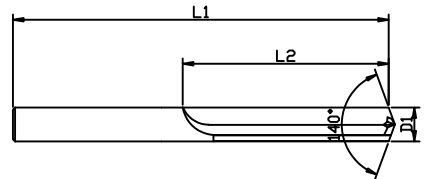
Solid Carbide Straight Flute Drill - Inch



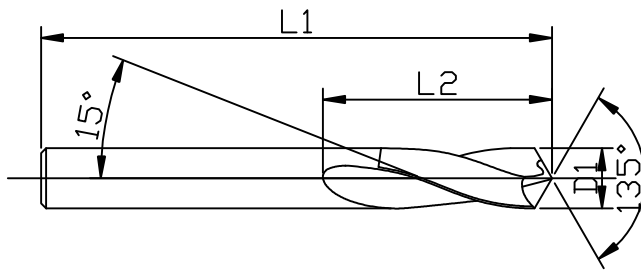
SERIES : HDRSFI

Application:
Hardened, treated, and abrasive materials
Stainless Steel
Cryogenic alloys

| ITEM CODE | DIA D1 | DEC EQV | FL L2 | OAL L1 |
|------------|-----------|------------|----------|-----------|
| HDRSFD2610 | G | 0.2610 | 1-7/16 | 2-5/8 |
| HDRSFD2656 | 17/64 | 0.2656 | 1-7/16 | 2-5/8 |
| HDRSFD2660 | H | 0.2660 | 1-1/2 | 2-11\16 |
| HDRSFD2720 | I | 0.2720 | 1-1/2 | 2-11\16 |
| HDRSFD2770 | J | 0.2770 | 1-1/2 | 2-11\16 |
| HDRSFD2810 | K | 0.2810 | 1-1/2 | 2-11\16 |
| HDRSFD2812 | 9/32 | 0.2812 | 1-1/2 | 2-11\16 |
| HDRSFD2900 | L | 0.2900 | 1-9/16 | 2-3/4 |
| HDRSFD2950 | M | 0.2950 | 1-9/16 | 2-3/4 |
| HDRSFD2969 | 19/64 | 0.2969 | 1-9/16 | 2-3/4 |
| HDRSFD3020 | N | 0.3020 | 1-5/8 | 2-13\16 |
| HDRSFD3125 | 5/16 | 0.3125 | 1-5/8 | 2-13\16 |
| HDRSFD3160 | O | 0.3160 | 1-11\16 | 2-15\16 |
| HDRSFD3230 | P | 0.3230 | 1-11\16 | 2-15\16 |
| HDRSFD3281 | 21/64 | 0.3281 | 1-11\16 | 2-15\16 |
| HDRSFD3320 | Q | 0.3320 | 1-11\16 | 3 |
| HDRSFD3390 | R | 0.3390 | 1-11\16 | 3 |
| HDRSFD3438 | 11/32 | 0.3438 | 1-11\16 | 3 |
| HDRSFD3480 | S | 0.3480 | 1-3/4 | 3-1\16 |
| HDRSFD3580 | T | 0.3580 | 1-3/4 | 3-1\16 |
| HDRSFD3594 | 23/64 | 0.3594 | 1-3/4 | 3-1\16 |
| HDRSFD3680 | U | 0.3680 | 1-13\16 | 3-1\8 |
| HDRSFD3750 | 3/8 | 0.3750 | 1-13\16 | 3-1\8 |
| HDRSFD3770 | V | 0.3770 | 1-7\8 | 3-1\4 |
| HDRSFD3860 | W | 0.3860 | 1-7\8 | 3-1\4 |
| HDRSFD3906 | 25/64 | 0.3906 | 1-7\8 | 3-1\4 |
| HDRSFD3970 | X | 0.3970 | 1-15\16 | 3-5\16 |
| HDRSFD4040 | Y | 0.4040 | 1-15\16 | 3-5\16 |
| HDRSFD4062 | 13/32 | 0.4062 | 1-15\16 | 3-5\16 |
| HDRSFD4130 | Z | 0.4130 | 2 | 3-3\8 |
| HDRSFD4219 | 27/64 | 0.4219 | 2 | 3-3\8 |
| HDRSFD4375 | 7/16 | 0.4375 | 2-1\16 | 3-7\16 |
| HDRSFD4531 | 29/64 | 0.4531 | 2-1\8 | 3-9\16 |
| HDRSFD4688 | 15/32 | 0.4688 | 2-1\8 | 3-5\8 |
| HDRSFD4844 | 31/64 | 0.4844 | 2-3\16 | 3-11\16 |
| HDRSFD5000 | 1/2 | 0.5000 | 2-1\4 | 3-3\4 |



Solid Carbide 15° Helix Drill - Inch



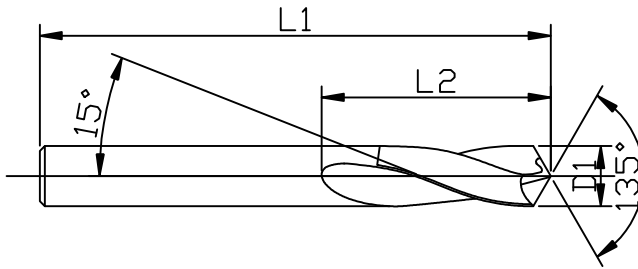
Application:
 Work hardened and gummy materials
 High temperature alloy steels
 Titanium
 Inconel
 Cast iron
 Stainless Steel

SERIES : HDR15I

| ITEM CODE | DIA D1 | DEC EQV | FL L2 | OAL L1 |
|------------|-----------|------------|----------|-----------|
| HDR15D0465 | 56 | 0.0465 | 1/2 | 1-1/2 |
| HDR15D0469 | 3/64 | 0.0469 | 1/2 | 1-1/2 |
| HDR15D0520 | 55 | 0.0520 | 1/2 | 1-1/2 |
| HDR15D0550 | 54 | 0.0550 | 1/2 | 1-1/2 |
| HDR15D0595 | 53 | 0.0595 | 1/2 | 1-1/2 |
| HDR15D0625 | 1/16 | 0.0625 | 5/8 | 1-5/8 |
| HDR15D0635 | 52 | 0.0635 | 11/16 | 1-11/16 |
| HDR15D0670 | 51 | 0.0670 | 11/16 | 1-11/16 |
| HDR15D0700 | 50 | 0.0700 | 11/16 | 1-11/16 |
| HDR15D0730 | 49 | 0.0730 | 11/16 | 1-11/16 |
| HDR15D0760 | 48 | 0.0760 | 11/16 | 1-11/16 |
| HDR15D0781 | 5/64 | 0.0781 | 11/16 | 1-11/16 |
| HDR15D0785 | 47 | 0.0785 | 3/4 | 1-3/4 |
| HDR15D0810 | 46 | 0.0810 | 3/4 | 1-3/4 |
| HDR15D0820 | 45 | 0.0820 | 3/4 | 1-3/4 |
| HDR15D0860 | 44 | 0.0860 | 3/4 | 1-3/4 |
| HDR15D0890 | 43 | 0.0890 | 3/4 | 1-3/4 |
| HDR15D0935 | 42 | 0.0935 | 3/4 | 1-3/4 |
| HDR15D0938 | 3/32 | 0.0938 | 3/4 | 1-3/4 |
| HDR15D0960 | 41 | 0.0960 | 13/16 | 1-13/16 |
| HDR15D0980 | 40 | 0.0980 | 13/16 | 1-13/16 |
| HDR15D0995 | 39 | 0.0995 | 13/16 | 1-13/16 |
| HDR15D1015 | 38 | 0.1015 | 13/16 | 1-13/16 |
| HDR15D1040 | 38 | 0.1040 | 13/16 | 1-13/16 |
| HDR15D1065 | 36 | 0.1065 | 13/16 | 1-13/16 |
| HDR15D1094 | 7/64 | 0.1094 | 13/16 | 1-13/16 |



Solid Carbide 15° Helix Drill - Inch



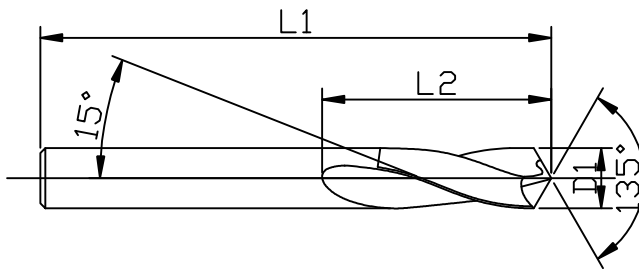
Application:
 Work hardened and gummy materials
 High temperature alloy steels
 Titanium
 Inconel
 Cast iron
 Stainless Steel

SERIES : HDR15I

| ITEM CODE | DIA D1 | DEC EQV | FL L2 | OAL L1 |
|------------|-----------|------------|----------|-----------|
| HDR15D1100 | 35 | 0.1100 | 7/8 | 1-7/8 |
| HDR15D1110 | 34 | 0.1110 | 7/8 | 1-7/8 |
| HDR15D1130 | 33 | 0.1130 | 7/8 | 1-7/8 |
| HDR15D1160 | 32 | 0.1160 | 7/8 | 1-7/8 |
| HDR15D1200 | 31 | 0.1200 | 7/8 | 1-7/8 |
| HDR15D1250 | 1/8 | 0.1250 | 7/8 | 1-7/8 |
| HDR15D1285 | 30 | 0.1285 | 15/16 | 1-15/16 |
| HDR15D1360 | 29 | 0.1360 | 15/16 | 1-15/16 |
| HDR15D1405 | 28 | 0.1405 | 15/16 | 1-15/16 |
| HDR15D1406 | 9/64 | 0.1406 | 15/16 | 1-15/16 |
| HDR15D1440 | 27 | 0.1440 | 1 | 2-1/16 |
| HDR15D1470 | 26 | 0.1470 | 1 | 2-1/16 |
| HDR15D1495 | 25 | 0.1495 | 1 | 2-1/16 |
| HDR15D1520 | 24 | 0.1520 | 1 | 2-1/16 |
| HDR15D1540 | 23 | 0.1540 | 1 | 2-1/16 |
| HDR15D1562 | 5/32 | 0.1562 | 1 | 2-1/16 |
| HDR15D1570 | 22 | 0.1570 | 1-1/16 | 2-1/8 |
| HDR15D1590 | 21 | 0.1590 | 1-1/16 | 2-1/8 |
| HDR15D1610 | 20 | 0.1610 | 1-1/16 | 2-1/8 |
| HDR15D1660 | 19 | 0.1660 | 1-1/16 | 2-1/8 |
| HDR15D1695 | 18 | 0.1695 | 1-1/16 | 2-1/8 |
| HDR15D1719 | 11/64 | 0.1719 | 1-1/16 | 2-1/8 |
| HDR15D1730 | 17 | 0.1730 | 1-1/8 | 2-3/16 |
| HDR15D1770 | 16 | 0.1770 | 1-1/8 | 2-3/16 |
| HDR15D1800 | 15 | 0.1800 | 1-1/8 | 2-3/16 |



Solid Carbide 15° Helix Drill - Inch



Application:
 Work hardened and gummy materials
 High temperature alloy steels
 Titanium
 Inconel
 Cast iron
 Stainless Steel

SERIES : HDR15I

| ITEM CODE | DIA D1 | DEC EQV | FL L2 | OAL L1 |
|-------------|-----------|------------|----------|-----------|
| HDR15D1820 | 14 | 0.1820 | 1-1/8 | 2-3/16 |
| HDR15D1850 | 13 | 0.1850 | 1-1/8 | 2-3/16 |
| HDR15D1875 | 3/16 | 0.1875 | 1-1/8 | 2-3/16 |
| HDR15D1890 | 12 | 0.1890 | 1-3/16 | 2-1/4 |
| HDR15D1910 | 11 | 0.1910 | 1-3/16 | 2-1/4 |
| HDR15D1935 | 10 | 0.1935 | 1-3/16 | 2-1/4 |
| HDR15D1960 | 9 | 0.1960 | 1-3/16 | 2-1/4 |
| HDR15D1990 | 8 | 0.1990 | 1-3/16 | 2-1/4 |
| HDR15D2010 | 7 | 0.2010 | 1-3/16 | 2-1/4 |
| HDR15D2031 | 13/64 | 0.2031 | 1-3/16 | 2-1/4 |
| HDR15D2040 | 6 | 0.2040 | 1-1/4 | 2-3/8 |
| HDR15D2055 | 5 | 0.2055 | 1-1/4 | 2-3/8 |
| HDR15D2090 | 4 | 0.2090 | 1-1/4 | 2-3/8 |
| HDR15D2130 | 3 | 0.2130 | 1-1/4 | 2-3/8 |
| HDR15D2188 | 7/32 | 0.2188 | 1-1/4 | 2-3/8 |
| HDR15D2210 | 2 | 0.2210 | 1-5/16 | 2-7/16 |
| HDR15D2280 | 1 | 0.2280 | 1-5/16 | 2-7/16 |
| HDR15D2340 | A | 0.2340 | 1-5/16 | 2-7/16 |
| HDR15D2344 | 15/64 | 0.2344 | 1-5/16 | 2-7/16 |
| HDR15D2380 | B | 0.2380 | 1-3/8 | 2-1/2 |
| HDR15D2420 | C | 0.2420 | 1-3/8 | 2-1/2 |
| HDR15D2460 | D | 0.2460 | 1-3/8 | 2-1/2 |
| HDR15D2500 | 1/4 | 0.2500 | 1-3/8 | 2-1/2 |
| HDR15D2500E | E | 0.2500 | 1-3/8 | 2-1/2 |
| HDR15D2570 | F | 0.2570 | 1-7/16 | 2-5/8 |



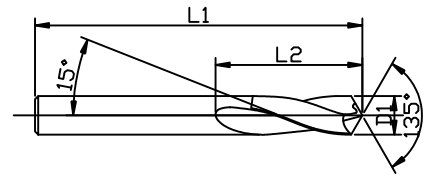
Solid Carbide 15° Helix Drill - Inch



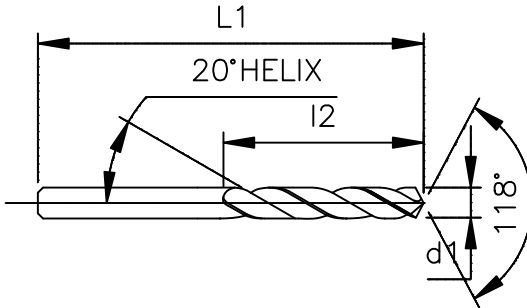
SERIES : HDR15I

| ITEM CODE | DIA D1 | DEC EQV | FL L2 | OAL L1 |
|------------|--------|---------|---------|---------|
| HDR15D2610 | G | 0.2610 | 1-7/16 | 2-5/8 |
| HDR15D2656 | 17/64 | 0.2656 | 1-7/16 | 2-5/8 |
| HDR15D2660 | H | 0.2660 | 1/1/2 | 2-11/16 |
| HDR15D2720 | I | 0.2720 | 1/1/2 | 2-11/16 |
| HDR15D2770 | J | 0.2770 | 1/1/2 | 2-11/16 |
| HDR15D2810 | K | 0.2810 | 1/1/2 | 2-11/16 |
| HDR15D2812 | 9/32 | 0.2812 | 1/1/2 | 2-11/16 |
| HDR15D2900 | L | 0.2900 | 1-9/16 | 2-3/4 |
| HDR15D2950 | M | 0.2950 | 1-9/16 | 2-3/4 |
| HDR15D2969 | 19/64 | 0.2969 | 1-9/16 | 2-3/4 |
| HDR15D3020 | N | 0.3020 | 1-5/8 | 2-13/16 |
| HDR15D3125 | 5/16 | 0.3125 | 1-5/8 | 2-13/16 |
| HDR15D3160 | O | 0.3160 | 1-11/16 | 2-15/16 |
| HDR15D3230 | P | 0.3230 | 1-11/16 | 2-15/16 |
| HDR15D3281 | 21/64 | 0.3281 | 1-11/16 | 2-15/16 |
| HDR15D3320 | Q | 0.3320 | 1-11/16 | 3 |
| HDR15D3390 | R | 0.3390 | 1-11/16 | 3 |
| HDR15D3438 | 11/32 | 0.3438 | 1-11/16 | 3 |
| HDR15D3480 | S | 0.3480 | 1-3/4 | 3-1/16 |
| HDR15D3580 | T | 0.3580 | 1-3/4 | 3-1/16 |
| HDR15D3594 | 23/64 | 0.3594 | 1-3/4 | 3-1/16 |
| HDR15D3680 | U | 0.3680 | 1-13/16 | 3-1/8 |
| HDR15D3750 | 3/8 | 0.3750 | 1-13/16 | 3-1/8 |
| HDR15D3770 | V | 0.3770 | 1-7/8 | 3-1/4 |
| HDR15D3860 | W | 0.3860 | 1-7/8 | 3-1/4 |
| HDR15D3906 | 25/64 | 0.3906 | 1-7/8 | 3-1/4 |
| HDR15D3970 | X | 0.3970 | 1-15/16 | 3-5/16 |
| HDR15D4040 | Y | 0.4040 | 1-15/16 | 3-5/16 |
| HDR15D4062 | 13/32 | 0.4062 | 1-15/16 | 3-5/16 |
| HDR15D4130 | Z | 0.4130 | 2 | 3-3/8 |
| HDR15D4219 | 27/64 | 0.4219 | 2 | 3-3/8 |
| HDR15D4375 | 7/16 | 0.4375 | 2-1/16 | 3-7/16 |
| HDR15D4531 | 29/64 | 0.4531 | 2-1/8 | 3-9/16 |
| HDR15D4688 | 15/32 | 0.4688 | 2-1/8 | 3-5/8 |
| HDR15D4844 | 31/64 | 0.4844 | 2-3/16 | 3-11/16 |
| HDR15D5000 | 1/2 | 0.5000 | 2-1/4 | 3-3/4 |

Application:
 Work hardened and gummy materials
 High temperature alloy steels
 Titanium
 Inconel
 Cast iron
 Stainless Steel



Solid Carbide 20° Helix Drill - Inch



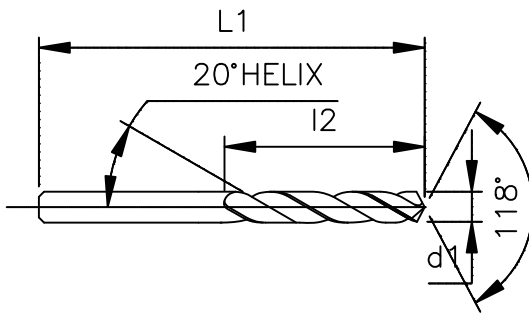
Application:
 Non-Ferrous alloys
 Cast iron
 Plastics
 Aluminum
 Highly abrasive materials

SERIES : HDR20I

| ITEM CODE | DIA D1 | DEC EQV | FL L2 | OAL L1 |
|------------|-----------|------------|----------|-----------|
| HDR20D0465 | 56 | 0.0465 | 3/4 | 1-1/2 |
| HDR20D0469 | 3/64 | 0.0469 | 3/4 | 1-1/2 |
| HDR20D0520 | 55 | 0.0520 | 3/4 | 1-1/2 |
| HDR20D0550 | 54 | 0.0550 | 3/4 | 1-1/2 |
| HDR20D0595 | 53 | 0.0595 | 3/4 | 1-1/2 |
| HDR20D0625 | 1/16 | 0.0625 | 3/4 | 1-1/2 |
| HDR20D0635 | 52 | 0.0635 | 3/4 | 1-1/2 |
| HDR20D0670 | 51 | 0.0670 | 3/4 | 1-1/2 |
| HDR20D0700 | 50 | 0.0700 | 7/8 | 1-3/4 |
| HDR20D0730 | 49 | 0.0730 | 7/8 | 1-3/4 |
| HDR20D0760 | 48 | 0.0760 | 7/8 | 1-3/4 |
| HDR20D0781 | 5/64 | 0.0781 | 7/8 | 1-3/4 |
| HDR20D0785 | 47 | 0.0785 | 7/8 | 1-3/4 |
| HDR20D0810 | 46 | 0.0810 | 7/8 | 1-3/4 |
| HDR20D0820 | 45 | 0.0820 | 7/8 | 1-3/4 |
| HDR20D0860 | 44 | 0.0860 | 1 | 2 |
| HDR20D0890 | 43 | 0.0890 | 1 | 2 |
| HDR20D0935 | 42 | 0.0935 | 1 | 2 |
| HDR20D0938 | 3/32 | 0.0938 | 1 | 2 |
| HDR20D0960 | 41 | 0.0960 | 1 | 2 |
| HDR20D0980 | 40 | 0.0980 | 1 | 2 |
| HDR20D0995 | 39 | 0.0995 | 1-1/4 | 2-1/4 |
| HDR20D1015 | 38 | 0.1015 | 1-1/4 | 2-1/4 |
| HDR20D1040 | 37 | 0.1040 | 1-1/4 | 2-1/4 |
| HDR20D1065 | 36 | 0.1065 | 1-1/4 | 2-1/4 |
| HDR20D1094 | 7/64 | 0.1094 | 1-1/4 | 2-1/4 |



Solid Carbide 20° Helix Drill - Inch



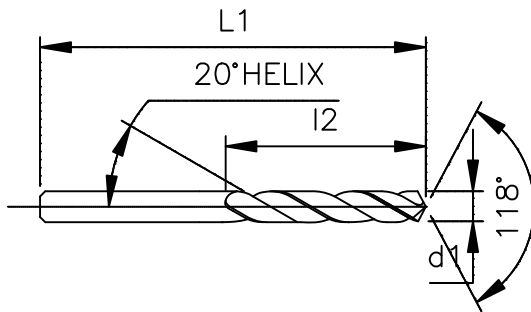
Application:
 Non-Ferrous alloys
 Cast iron
 Plastics
 Aluminum
 Highly abrasive materials

SERIES : HDR20I

| ITEM CODE | DIA D1 | DEC EQV | FL L2 | OAL L1 |
|------------|-----------|------------|----------|-----------|
| HDR20D1100 | 35 | 0.1100 | 1-1/4 | 2-1/4 |
| HDR20D1110 | 34 | 0.1110 | 1-1/4 | 2-1/4 |
| HDR20D1130 | 33 | 0.1130 | 1-1/4 | 2-1/4 |
| HDR20D1160 | 32 | 0.1160 | 1-1/4 | 2-1/4 |
| HDR20D1200 | 31 | 0.1200 | 1-1/4 | 2-1/4 |
| HDR20D1250 | 1/8 | 0.1250 | 1-1/4 | 2-1/4 |
| HDR20D1285 | 30 | 0.1285 | 1-1/4 | 2-1/4 |
| HDR20D1360 | 29 | 0.1360 | 1-3/8 | 2-1/2 |
| HDR20D1405 | 28 | 0.1405 | 1-3/8 | 2-1/2 |
| HDR20D1406 | 9/64 | 0.1406 | 1-3/8 | 2-1/2 |
| HDR20D1440 | 27 | 0.1440 | 1-3/8 | 2-1/2 |
| HDR20D1470 | 26 | 0.1470 | 1-3/8 | 2-1/2 |
| HDR20D1495 | 25 | 0.1495 | 1-3/8 | 2-1/2 |
| HDR20D1520 | 24 | 0.1520 | 1-3/8 | 2-1/2 |
| HDR20D1540 | 23 | 0.1540 | 1-3/8 | 2-1/2 |
| HDR20D1562 | 5/32 | 0.1562 | 1-3/8 | 2-1/2 |
| HDR20D1570 | 22 | 0.1570 | 1-3/8 | 2-1/2 |
| HDR20D1590 | 21 | 0.1590 | 1-3/8 | 2-1/2 |
| HDR20D1610 | 20 | 0.1610 | 1-3/8 | 2-1/2 |
| HDR20D1660 | 19 | 0.1660 | 1-5/8 | 2-3/4 |
| HDR20D1695 | 18 | 0.1695 | 1-5/8 | 2-3/4 |
| HDR20D1719 | 11/64 | 0.1719 | 1-5/8 | 2-3/4 |
| HDR20D1730 | 17 | 0.1730 | 1-5/8 | 2-3/4 |
| HDR20D1770 | 16 | 0.1770 | 1-5/8 | 2-3/4 |
| HDR20D1800 | 15 | 0.1800 | 1-5/8 | 2-3/4 |



Solid Carbide 20° Helix Drill - Inch



Application:
 Non-Ferrous alloys
 Cast iron
 Plastics
 Aluminum
 Highly abrasive materials

SERIES : HDR20I

| ITEM CODE | DIA D1 | DEC EQV | FL L2 | OAL L1 |
|-------------|-----------|------------|----------|-----------|
| HDR20D1820 | 14 | 0.1820 | 1-5/8 | 2-3/4 |
| HDR20D1850 | 13 | 0.1850 | 1-5/8 | 2-3/4 |
| HDR20D1875 | 3/16 | 0.1875 | 1-5/8 | 2-3/4 |
| HDR20D1890 | 12 | 0.1890 | 1-5/8 | 2-3/4 |
| HDR20D1910 | 11 | 0.1910 | 1-5/8 | 2-3/4 |
| HDR20D1935 | 10 | 0.1935 | 1-5/8 | 2-3/4 |
| HDR20D1960 | 9 | 0.1960 | 1-3/4 | 3 |
| HDR20D1990 | 8 | 0.1990 | 1-3/4 | 3 |
| HDR20D2010 | 7 | 0.2010 | 1-3/4 | 3 |
| HDR20D2031 | 13/64 | 0.2031 | 1-3/4 | 3 |
| HDR20D2040 | 6 | 0.2040 | 1-3/4 | 3 |
| HDR20D2055 | 5 | 0.2055 | 1-3/4 | 3 |
| HDR20D2090 | 4 | 0.2090 | 1-3/4 | 3 |
| HDR20D2130 | 3 | 0.2130 | 1-3/4 | 3 |
| HDR20D2188 | 7/32 | 0.2188 | 1-3/4 | 3 |
| HDR20D2210 | 2 | 0.2210 | 1-3/4 | 3 |
| HDR20D2280 | 1 | 0.2280 | 1-3/4 | 3 |
| HDR20D2340 | A | 0.2340 | 2 | 3-1/4 |
| HDR20D2344 | 15/64 | 0.2344 | 2 | 3-1/4 |
| HDR20D2380 | B | 0.2380 | 2 | 3-1/4 |
| HDR20D2420 | C | 0.2420 | 2 | 3-1/4 |
| HDR20D2460 | D | 0.2460 | 2 | 3-1/4 |
| HDR20D2500 | 1/4 | 0.2500 | 2 | 3-1/4 |
| HDR20D2500E | E | 0.2500 | 2 | 3-1/4 |
| HDR20D2570 | F | 0.2570 | 2 | 3-1/4 |



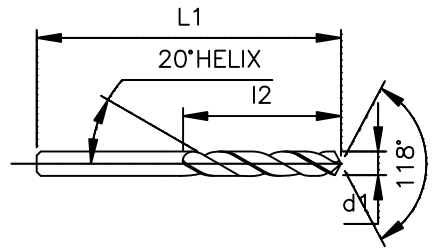
Solid Carbide 20° Helix Drill - Inch



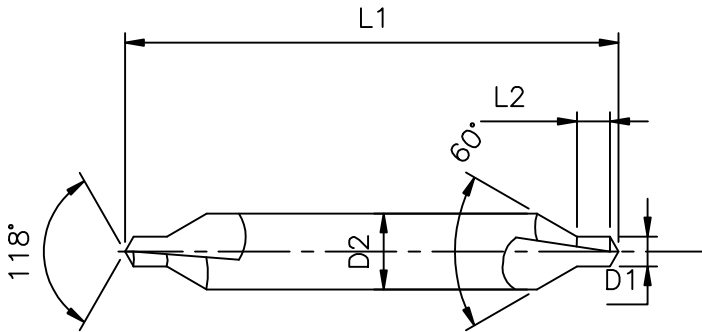
SERIES : HDR20I

| ITEM CODE | DIA D1 | DEC EQV | FL L2 | OAL L1 |
|------------|-----------|------------|----------|-----------|
| HDR20D2610 | G | 0.2610 | 2-1/8 | 3-1/2 |
| HDR20D2656 | 17/64 | 0.2656 | 2-1/8 | 3-1/2 |
| HDR20D2660 | H | 0.2660 | 2-1/8 | 3-1/2 |
| HDR20D2720 | I | 0.2720 | 2-1/8 | 3-1/2 |
| HDR20D2770 | J | 0.2770 | 2-1/8 | 3-1/2 |
| HDR20D2810 | K | 0.2810 | 2-1/8 | 3-1/2 |
| HDR20D2812 | 9/32 | 0.2812 | 2-1/8 | 3-1/2 |
| HDR20D2900 | L | 0.2900 | 2-1/8 | 3-1/2 |
| HDR20D2950 | M | 0.2950 | 2-3/8 | 3-3/4 |
| HDR20D2969 | 19/64 | 0.2969 | 2-3/8 | 3-3/4 |
| HDR20D3020 | N | 0.3020 | 2-3/8 | 3-3/4 |
| HDR20D3125 | 5/16 | 0.3125 | 2-3/8 | 3-3/4 |
| HDR20D3160 | O | 0.3160 | 2-3/8 | 3-3/4 |
| HDR20D3230 | P | 0.3230 | 2-3/8 | 3-3/4 |
| HDR20D3281 | 21/64 | 0.3281 | 2-1/2 | 4 |
| HDR20D3320 | Q | 0.3320 | 2-1/2 | 4 |
| HDR20D3390 | R | 0.3390 | 2-1/2 | 4 |
| HDR20D3438 | 11/32 | 0.3438 | 2-1/2 | 4 |
| HDR20D3480 | S | 0.3480 | 2-1/2 | 4 |
| HDR20D3580 | T | 0.3580 | 2-1/2 | 4 |
| HDR20D3594 | 23/64 | 0.3594 | 2-1/2 | 4 |
| HDR20D3680 | U | 0.3680 | 2-3/4 | 4-1/4 |
| HDR20D3750 | 3/8 | 0.3750 | 2-3/4 | 4-1/4 |
| HDR20D3770 | V | 0.3770 | 2-3/4 | 4-1/4 |
| HDR20D3860 | W | 0.3860 | 2-7/8 | 4-1/2 |
| HDR20D3906 | 25/64 | 0.3906 | 2-7/8 | 4-1/2 |
| HDR20D3970 | X | 0.3970 | 2-7/8 | 4-1/2 |
| HDR20D4040 | Y | 0.4040 | 2-7/8 | 4-1/2 |
| HDR20D4062 | 13/32 | 0.4062 | 2-7/8 | 4-1/2 |
| HDR20D4130 | Z | 0.4130 | 2-7/8 | 4-1/2 |
| HDR20D4219 | 27/64 | 0.4219 | 2-7/8 | 4-1/2 |
| HDR20D4375 | 7/16 | 0.4375 | 2-7/8 | 4-1/2 |
| HDR20D4531 | 29/64 | 0.4531 | 3 | 4-3/4 |
| HDR20D4688 | 15/32 | 0.4688 | 3 | 4-3/4 |
| HDR20D4844 | 31/64 | 0.4844 | 3 | 4-3/4 |
| HDR20D5000 | 1/2 | 0.5000 | 3 | 4-3/4 |

Application:
 Non-Ferrous alloys
 Cast iron
 Plastics
 Aluminum
 Highly abrasive materials



Solid Carbide Centre Drills



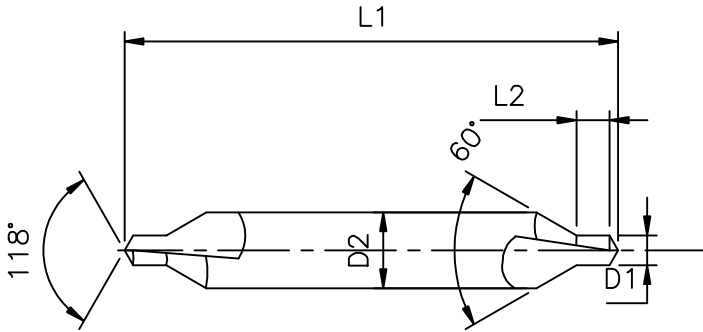
SERIES : HCD

| ITEM CODE | DIA (D1) | Body Dia (D2) | Pilot Length (L2) | OAL (L1) |
|------------------|-------------|------------------|----------------------|-------------|
| HCDR 0100 | 1 | 3.15 | 1.6 | 31.5 |
| HCDR 0125 | 1.25 | 3.15 | 1.9 | 31.5 |
| HCDR 0160 | 1.6 | 4 | 2.4 | 35.5 |
| HCDR 0200 | 2 | 5 | 2.9 | 40 |
| HCDR 0250 | 2.5 | 6.3 | 3.6 | 45 |
| HCDR 0315 | 3.15 | 8 | 4.4 | 50 |
| HCDR 0400 | 4 | 10 | 5.6 | 56 |
| HCDR 0500 | 5 | 12.5 | 6.9 | 63 |
| HCDR 0630 | 6.3 | 16 | 8.6 | 71 |



As per din 333 A

Combination Drill Countersink
118° 4 Facet Point - Straight Flute - 60° C'sink Angle



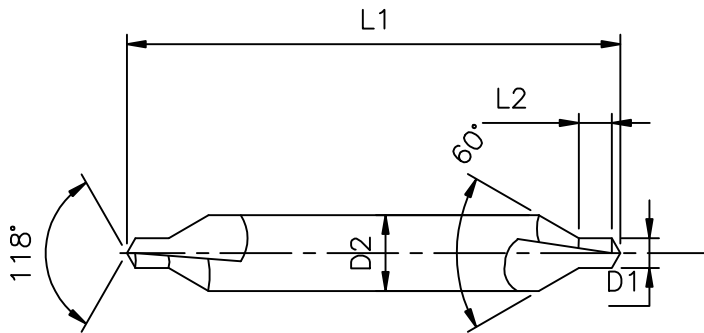
SERIES : HCDSM

| ITEM CODE | PILOT DIA D1 | PILOT LENGTH L2 | BODY DIA D2 | OAL L1 |
|-------------|-----------------|-----------------------|----------------|-----------|
| HCD0050L038 | 0.50 | 19 | 3.0 | 38 |
| HCD0080L038 | 0.80 | 22 | 3.0 | 38 |
| HCD0100L038 | 1.00 | 25 | 3.0 | 38 |
| HCD0125L038 | 1.25 | 32 | 3.0 | 38 |
| HCD0160L050 | 1.60 | 35 | 4.0 | 50 |
| HCD0200L050 | 2.00 | 35 | 5.0 | 50 |
| HCD0250L064 | 2.50 | 41 | 6.0 | 64 |
| HCD0315L064 | 3.15 | 44 | 8.0 | 64 |
| HCD0400L064 | 4.00 | 50 | 10.0 | 64 |
| HCD0500L064 | 5.00 | 60 | 12.0 | 64 |
| HCD0630L076 | 6.30 | 45 | 16.0 | 76 |
| HCD0800L100 | 8.00 | 50 | 20.0 | 100 |
| HCD1000L100 | 10.0 | 55 | 25.0 | 100 |



| | | |
|-----------|-----------------|-----------------|
| Size | Pilot DIA (D1) | Shank DIA (D2) |
| up to 3mm | +0.000~ -.025mm | +0.000~ -.006mm |
| over 3mm | +0.000~-.038mm | +0.000~-.008mm |

Combination Drill Countersink
118° 4 Facet Point - Straight Flute - 60° C'sink Angle



SERIES : HCDSI

| ITEM CODE | TOOL NO. | BODY DIA D2 | PILOT DIA D1 | OAL L1 | PILOT LENGTH L2 |
|-----------|----------|----------------|-----------------|-----------|-----------------------|
| HCD0010 | 1 | 1/8 | 3/64 | 1-1/4 | 3/64 |
| HCD0020 | 2 | 3/16 | 5/64 | 1-7/8 | 5/64 |
| HCD0030 | 3 | 1/4 | 7/64 | 2 | 7/64 |
| HCD0040 | 4 | 5/16 | 1/8 | 2-1/8 | 1/8 |
| HCD0050 | 5 | 7/16 | 3/16 | 2-3/4 | 3/16 |
| HCD0060 | 6 | 1/2 | 7/32 | 3 | 7/32 |

